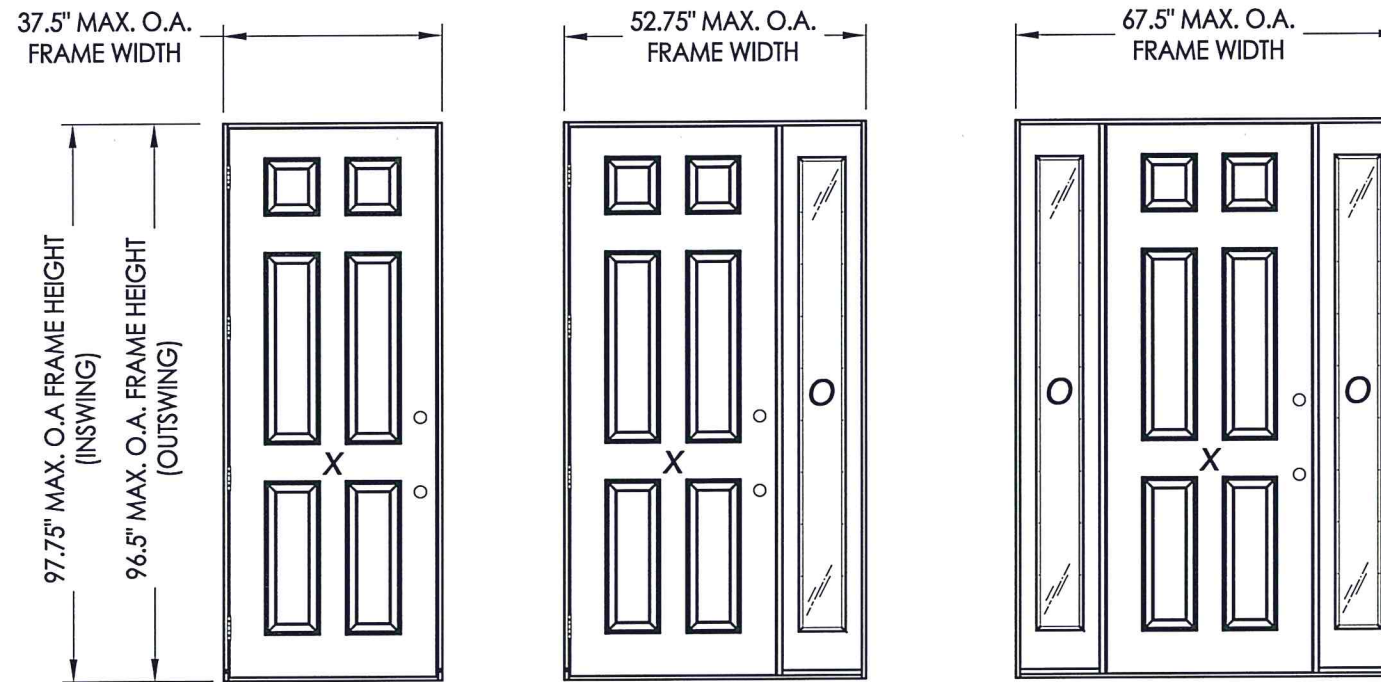


OPAQUE FIBERGLASS SINGLE DOOR w/ or w/out SIDELITE(S) "IMPACT" INSWING / OUTSWING

GENERAL NOTES

1. This product has been evaluated and is in compliance with the 7th Edition (2020) Florida Building Code (FBC) structural requirements excluding the "High Velocity Hurricane Zone" (HVHZ).
2. Product anchors shall be as listed and spaced as shown on details. Anchor embedment to base material shall be beyond wall dressing or stucco.
3. When used in areas requiring wind borne debris protection, this product complies with FBC Sections 1609.1.2 & R301.2.1.2 and does not require an impact resistant covering. This product meets missile level "D" and excludes Wind Zone 4 as defined in ASTM E 1996 and FBC Sections 1609.1.2.2 & R301.2.1.2.1.
4. For 2x stud framing construction, anchoring of these units shall be the same as that shown for 2x buck masonry construction.
5. Site conditions that deviate from the details of this drawing require further engineering analysis by a licensed engineer or registered architect.

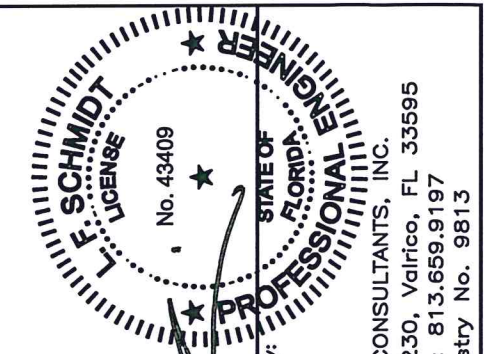
TABLE OF CONTENTS	
SHEET#	DESCRIPTION
1	Typical elevations, design pressures & general notes
2	Door panel details
3	Sidelite panel details
4	Elevations
5	Horizontal & vertical cross sections (2X buck)
6	Horizontal & vertical cross sections (1X buck)
7	Horizontal & vertical cross sections (Direct to Masonry)
8	Horizontal cross sections
9	Vertical cross sections
10	Buck anchoring
11	Frame anchoring
12	Components
13	Bill of materials



Continuous Head and Sill

Continuous Head and Sill

CONFIGURATION	FRAME MATERIAL	DESIGN PRESSURE (PSF) INSWING		DESIGN PRESSURE (PSF) OUTSWING	
		POSITIVE	NEGATIVE	POSITIVE	NEGATIVE
X	FJ PINE	+50.0	-50.0	+50.0	-50.0
	PVC	+50.0	-50.0	+50.0	-50.0
OX, XO, OXO	FJ PINE	+40.0	-45.0	+45.0	-45.0
	PVC	+45.0	-50.0	+45.0	-45.0

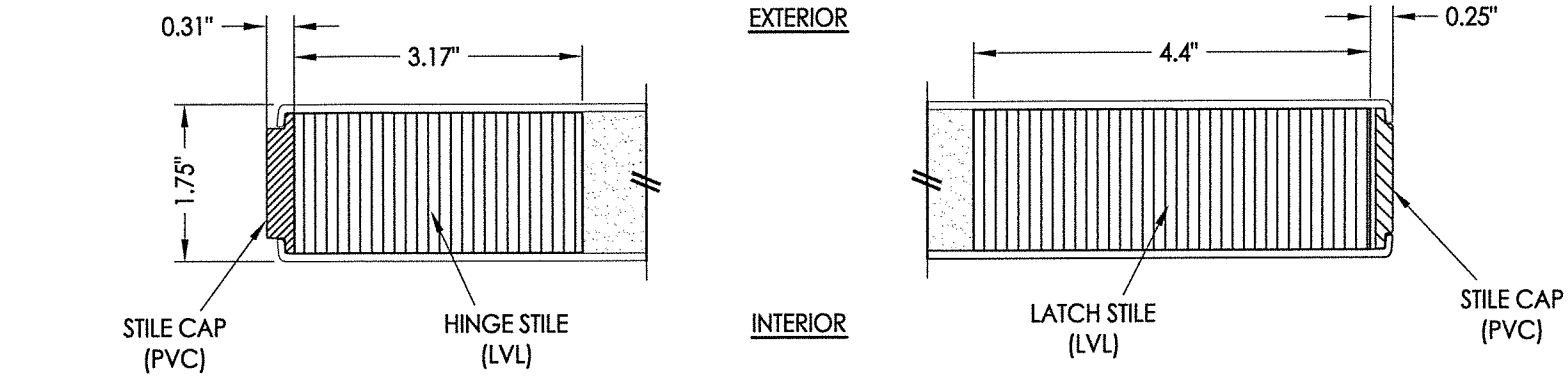


Lyndon F. Schmidt
P.E. No. 43409
April 13, 2021
RW BUILDING CONSULTANTS, INC.
P.O. Box 230, Valrico, FL 33595
Phone No.: 813.659.9197
FBPE Registry No. 9813

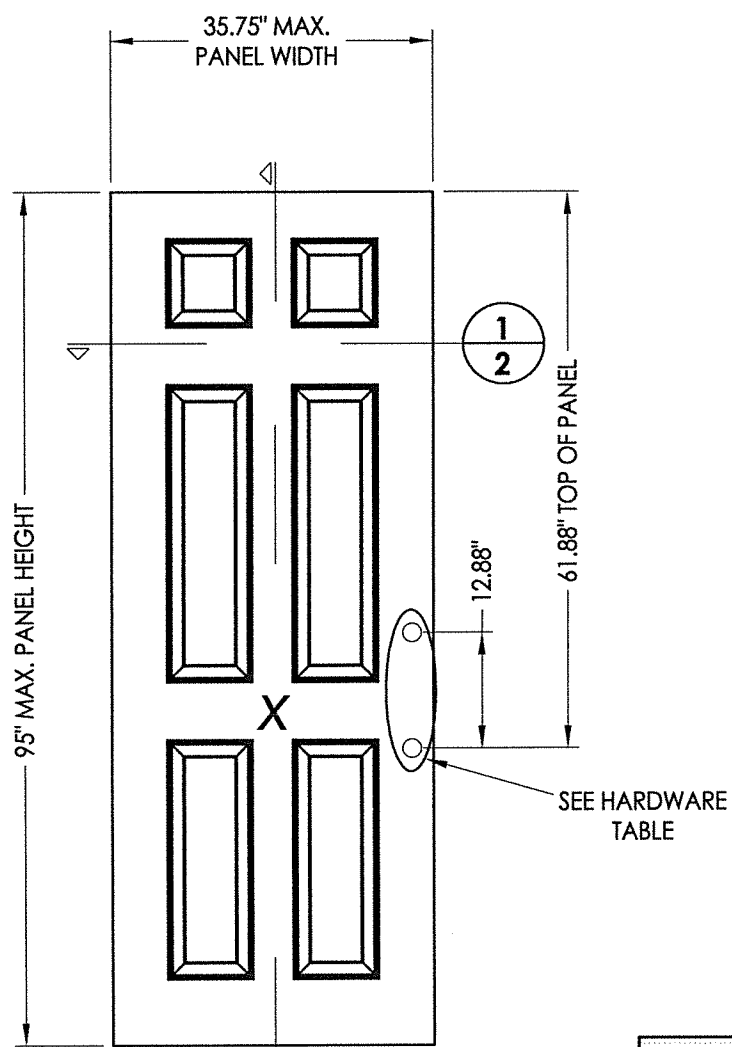
PRODUCT:	TRINITY GLASS INT'L
PART OR ASSEMBLY:	TYPICAL ELEVATION, DESIGN PRESSURES & GENERAL NOTES
NO.	DATE
BY	REVISIONS
DATE:	3/24/21
SCALE:	N.T.S.
DWG. BY:	RW
CHK. BY:	LFS
DRAWING NO.:	FL-25575.13
SHEET	1 OF 13

Z:\Clients\Trinity Glass PERMANENT\A - Florida Product Approvals\FL - 25575\C. Drawings\FL 25575 (2020)\FL-25575.13.dwg

Z:\Clients\Trinity Glass PERMANENTA - Florida Product Approvals\FL - 25575\C. Drawings\FL 25575 (2020)\FL-25575.13.dwg



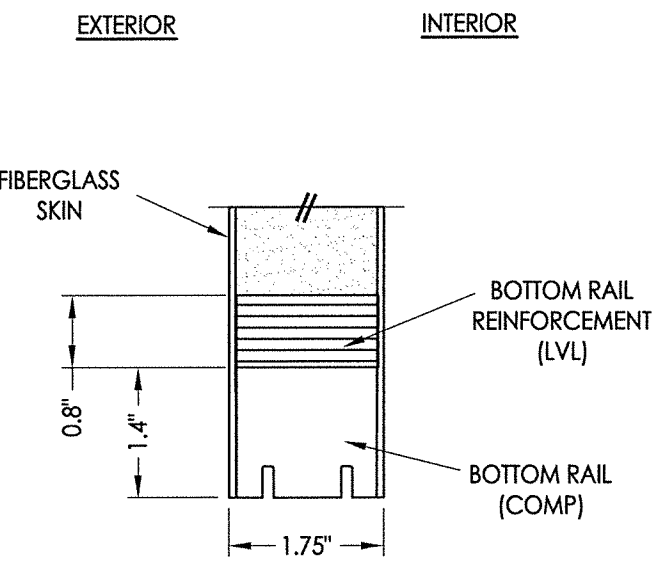
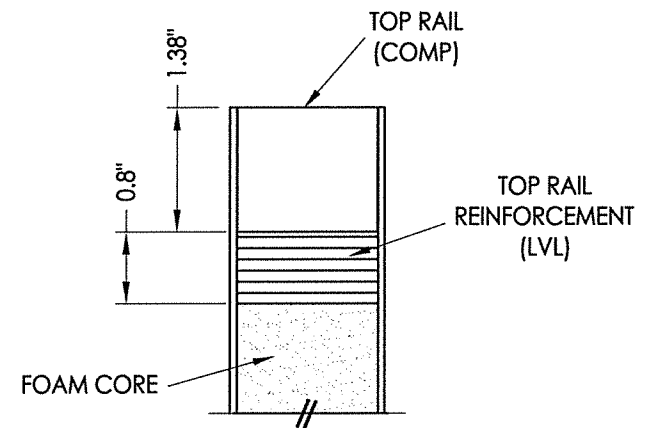
1
2 **HORIZONTAL CROSS SECTION**



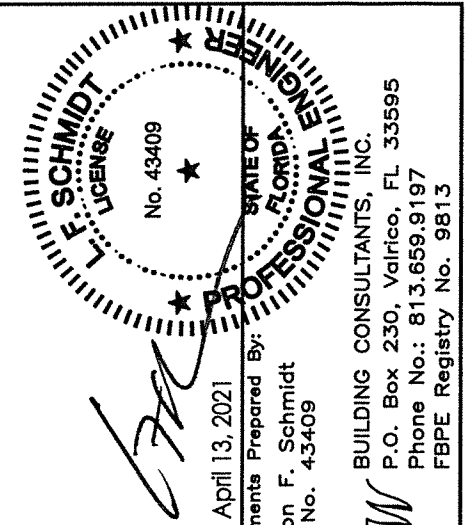
2
2 **40 OPAQUE DOOR PANEL**
Fiberglass

HARDWARE CHART		
MANUFACTURER	MODEL	
KWIKSET	KNOB:	SIGNATURE SERIES
	DEADBOLT:	SIGNATURE SERIES (980)
SCHLAGE	KNOB:	F SERIES
	DEADBOLT:	B60 SERIES

DOOR SKIN: 0.085" MIN. THK. FIBERGLASS
CORE MATERIAL: POLYURETHANE FOAM

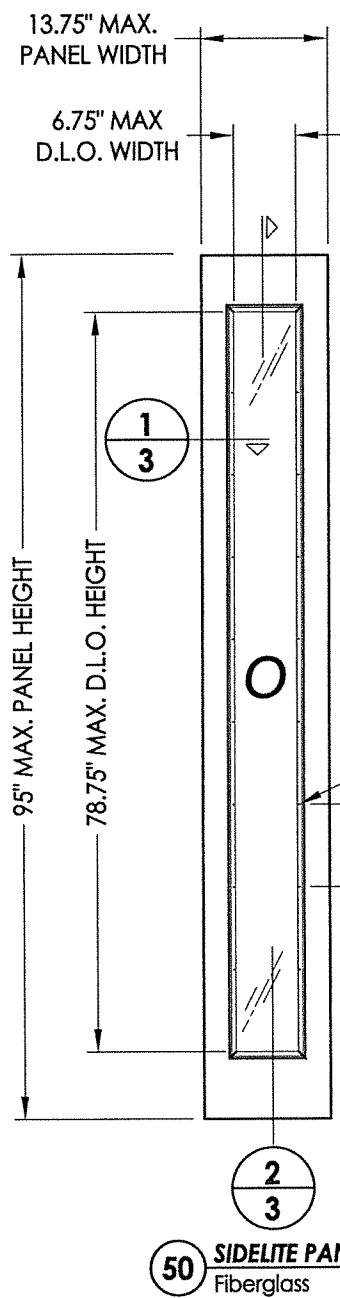


2
2 **VERTICAL CROSS SECTION**



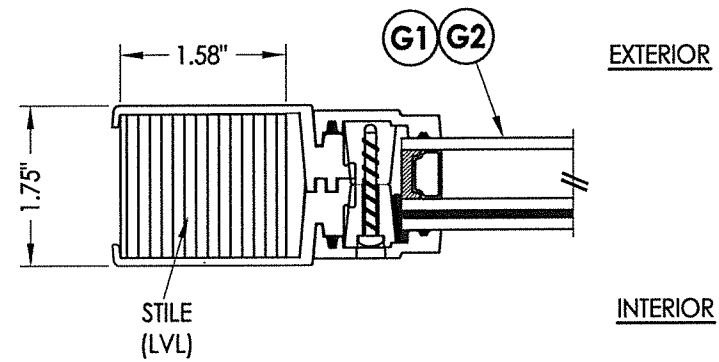
Documents Prepared By:
Lyndon F. Schmidt
P.E. No. 43409
April 13, 2021
R.W. BUILDING CONSULTANTS, INC.
P.O. Box 230, Valrico, FL 33595
Phone No.: 813.659.9197
FBPE Registry No. 9813

PRODUCT:	TRINITY GLASS INT'L	
PART OR ASSEMBLY:	DOOR PANEL DETAILS	
NO.	DATE	BY
REVISIONS		
DATE:	3/24/21	
SCALE:	N.T.S.	
DWG. BY:	RW	
CHK. BY:	LFS	
DRAWING NO.:	FL-25575.13	
SHEET	2 OF 13	

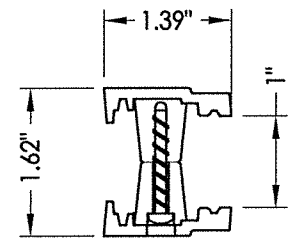


50 SIDELITE PANEL
Fiberglass

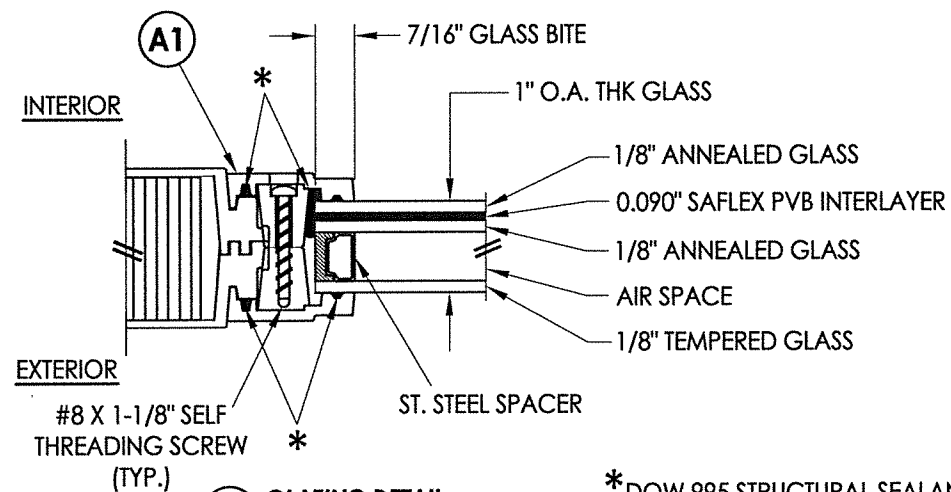
DOOR SKIN: 0.075" MIN. THK. FIBERGLASS
CORE MATERIAL: POLYURETHANE FOAM



1 HORIZONTAL CROSS SECTION
3

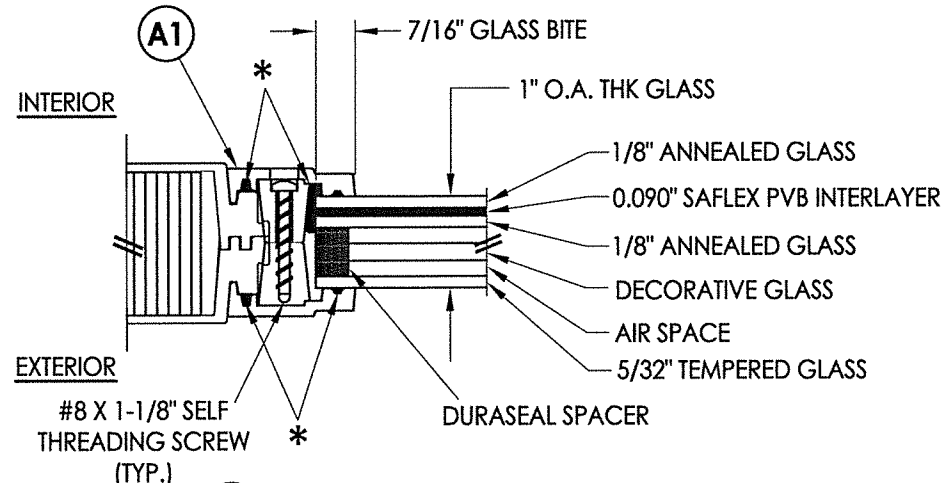


A1 LITE FRAME

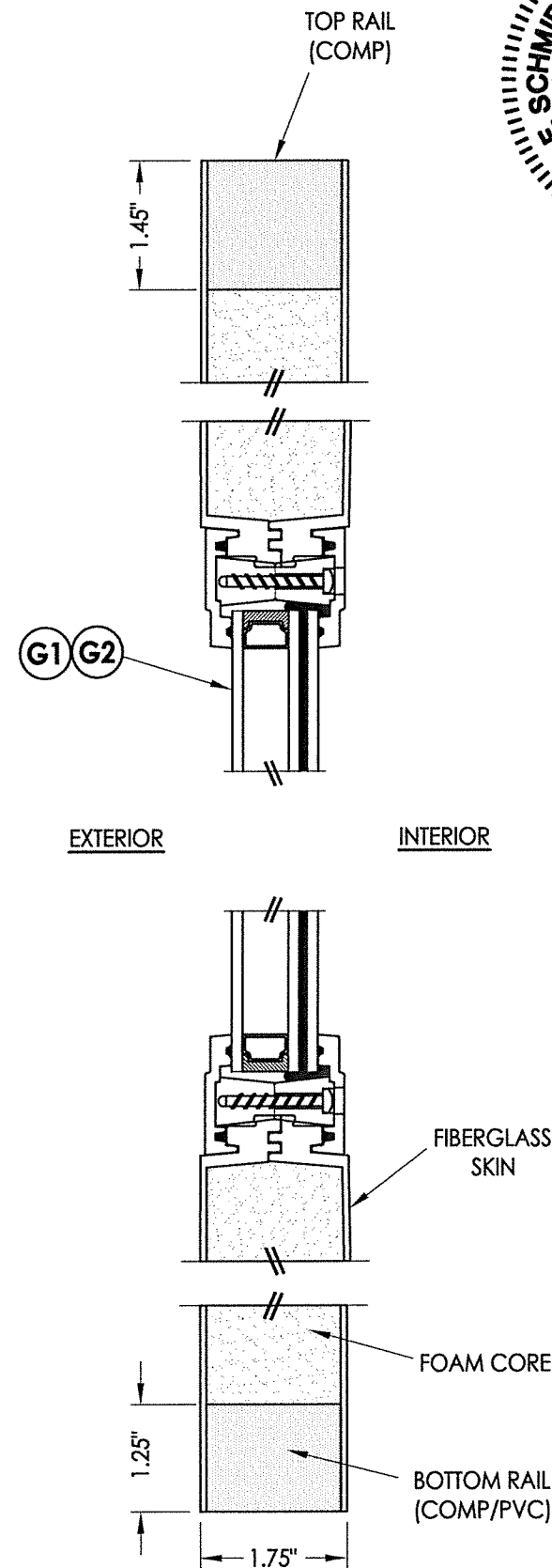


G1 GLAZING DETAIL
DUAL GLAZED

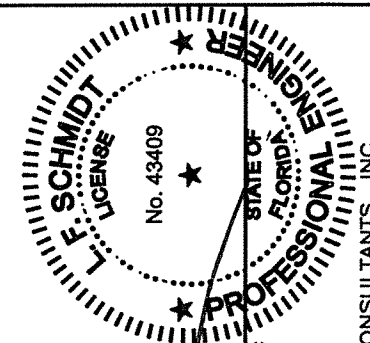
*DOW 995 STRUCTURAL SEALANT



G2 GLAZING DETAIL
TRIPLE GLAZED



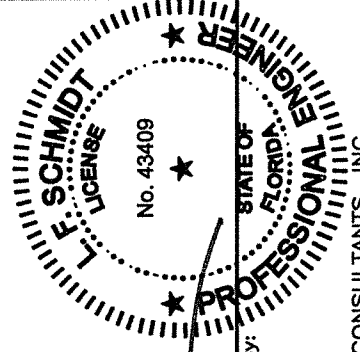
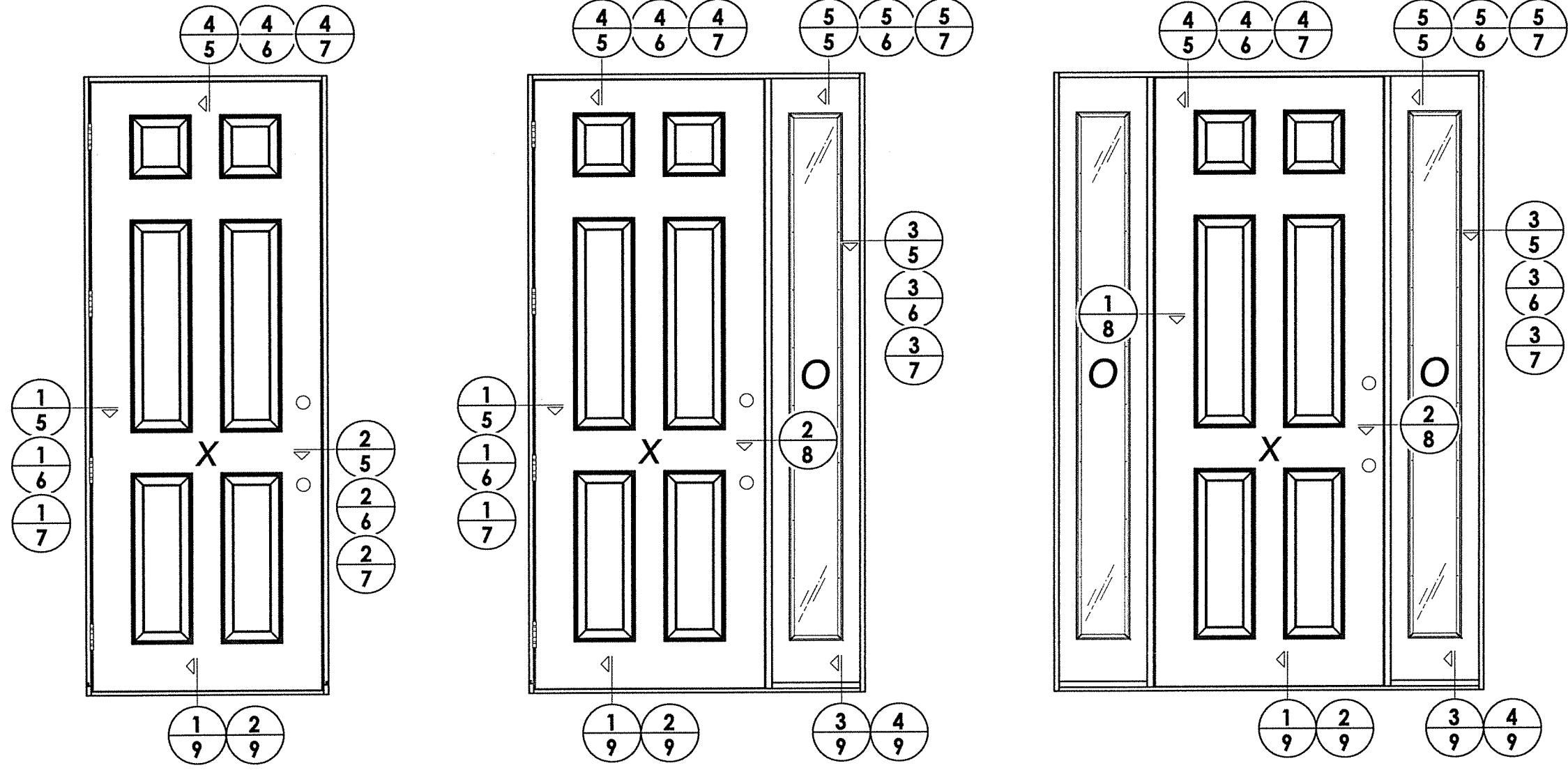
2 VERTICAL CROSS SECTION
3



April 13, 2021
Documents Prepared By:
Lyndon F. Schmidt
P.E. No. 43409

RW BUILDING CONSULTANTS, INC.
P.O. Box 230, Valrico, FL 33595
Phone No.: 813.659.9197
FBPE Registry No. 9813

PRODUCT:	TRINITY GLASS INT'L
PART OR ASSEMBLY:	SIDELITE PANEL DETAILS
NO.	DATE
BY	REVISIONS
DATE:	3/24/21
SCALE:	N.T.S.
DWG. BY:	RW
CHK. BY:	LFS
DRAWING NO.:	FL-25575.13
SHEET	3 OF 13

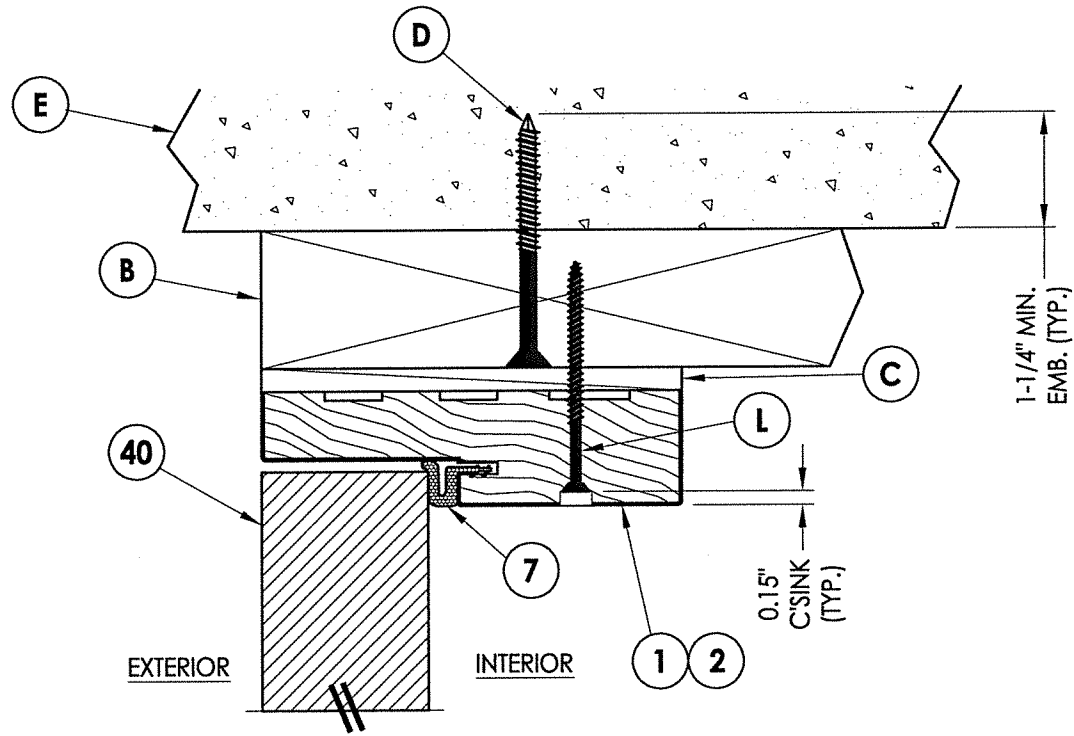


LF
 April 13, 2021
 Documents Prepared By:
 Lyndon F. Schmidt
 P.E. No. 43409

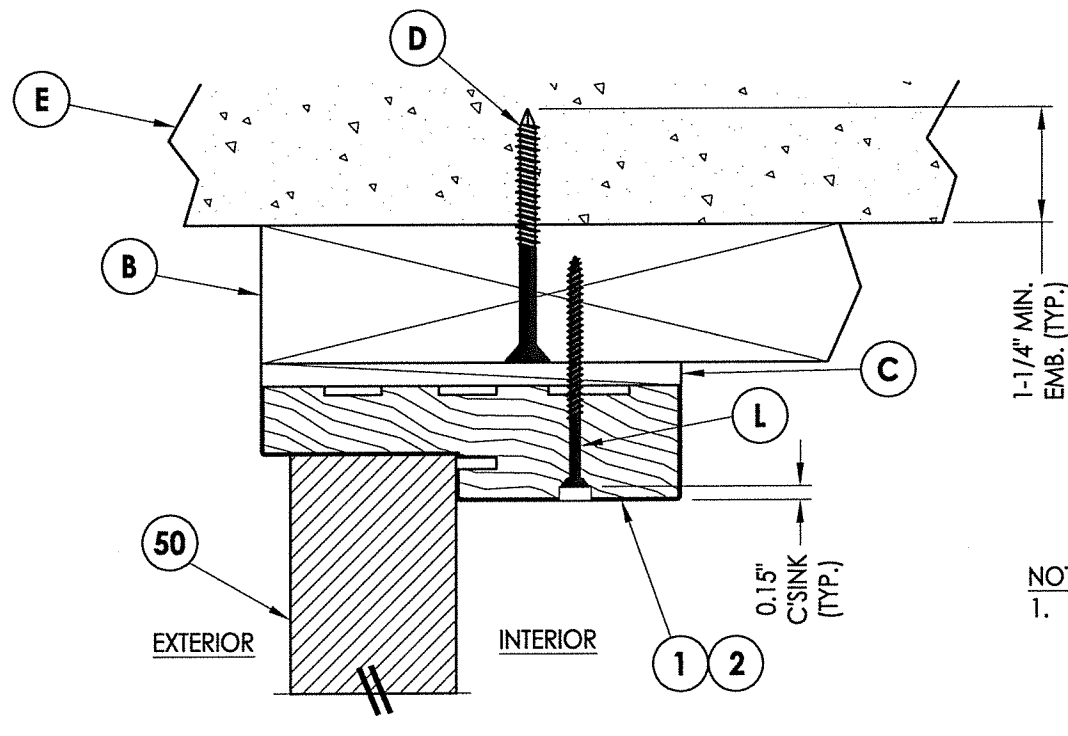
RW BUILDING CONSULTANTS, INC.
 P.O. Box 230, Valrico, FL 33595
 Phone No.: 813.659.9197
 FBPE Registry No. 9813

PRODUCT: TRINITY GLASS INT'L	
PART OR ASSEMBLY: ELEVATIONS	
NO.	DATE
BY	REVISIONS
DATE: 3/24/21	
SCALE: N.T.S.	
DWG. BY: RW	
CHK. BY: LFS	
DRAWING NO.: FL-25575.13	
SHEET 4 OF 13	

Z:\Clients\Trinity Glass PERMANENT\A - Florida Product Approvals\FL - 25575\C. Drawings\FL 25575 (2020)\FL-25575.13.dwg

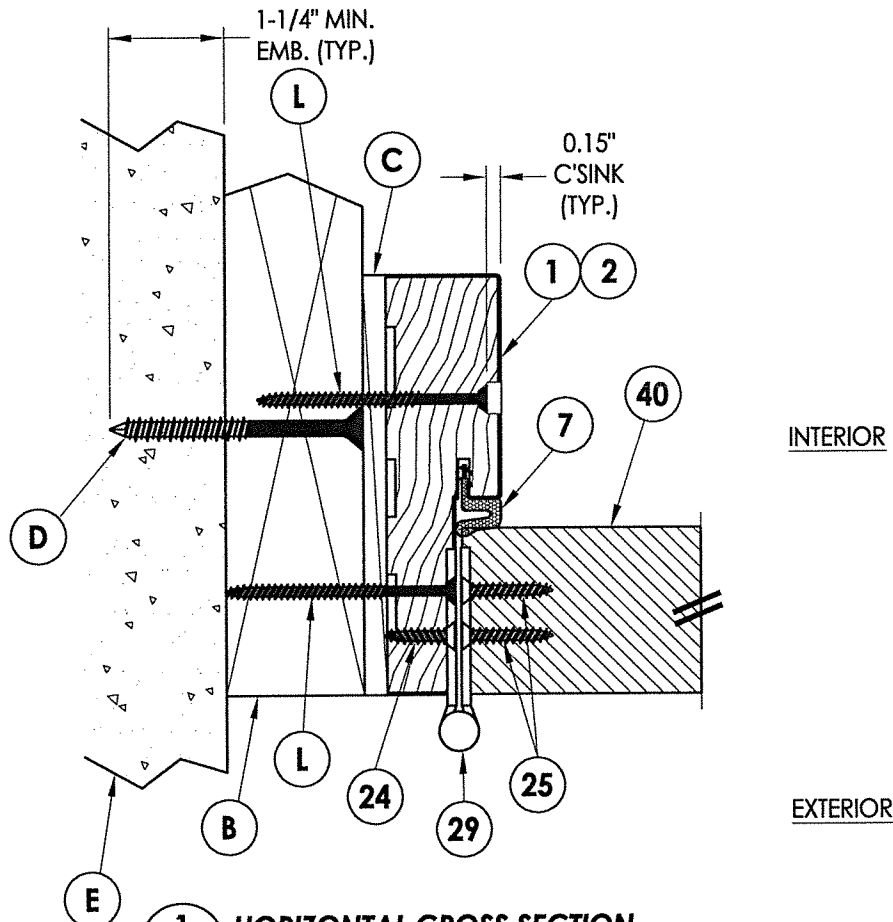


4 VERTICAL CROSS SECTION
5 Outswing shown - Inswing also approved

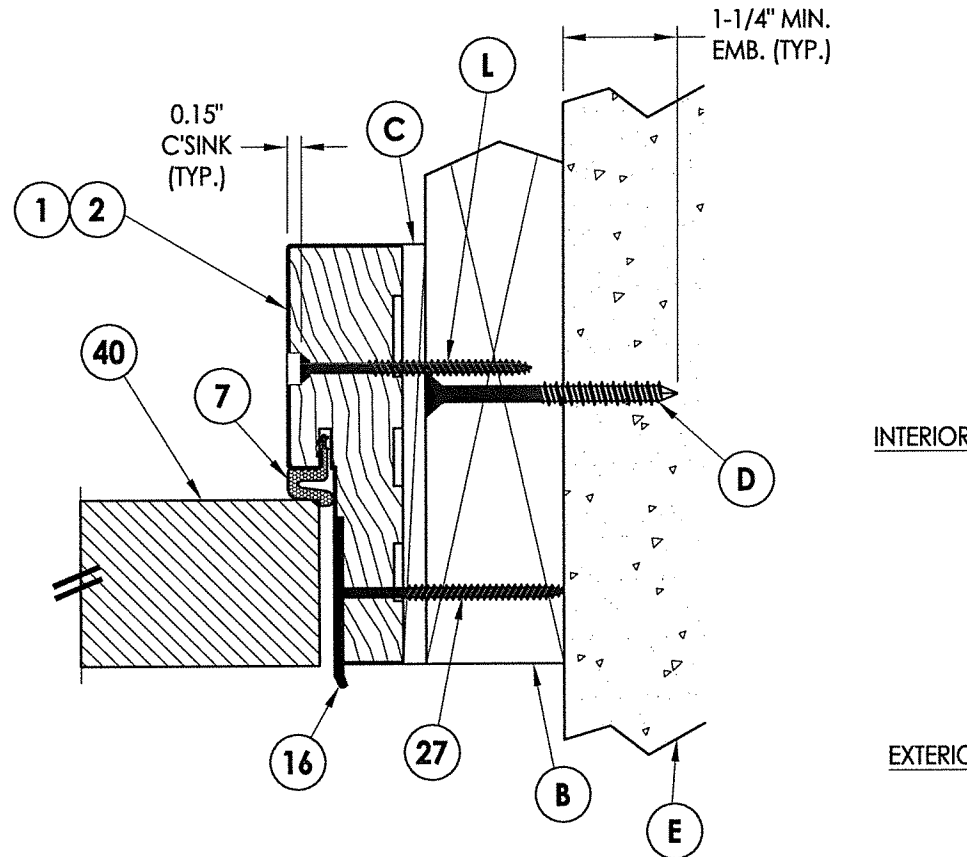


5 VERTICAL CROSS SECTION
5 Outswing shown - Inswing also approved

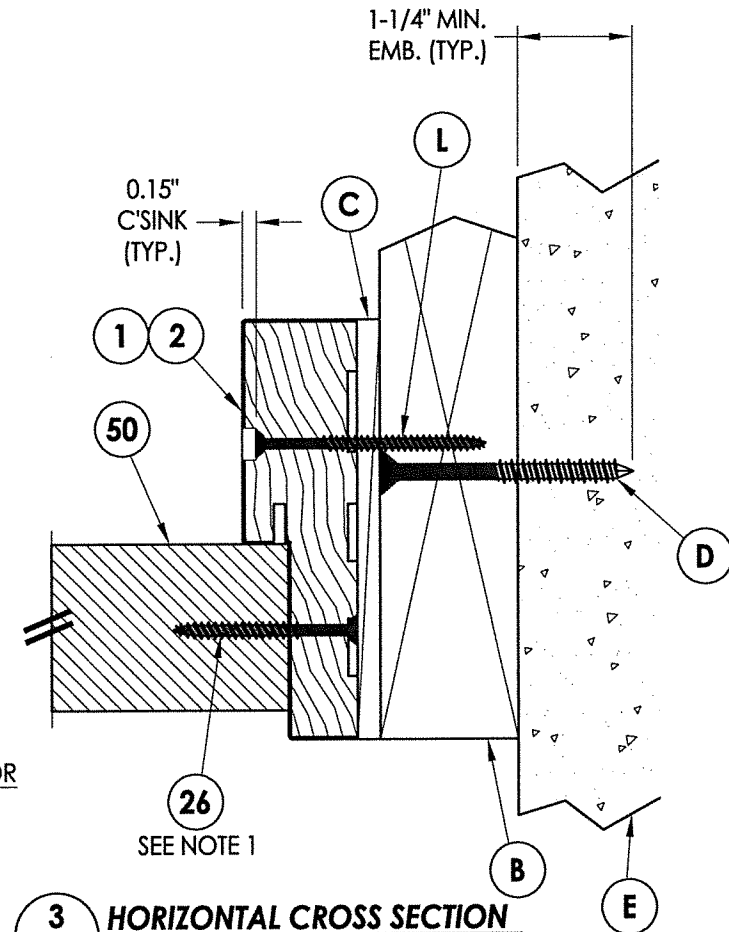
NOTE:
 1. Item #26 located 6" from each end plus 5 more equally spaced (7 total).



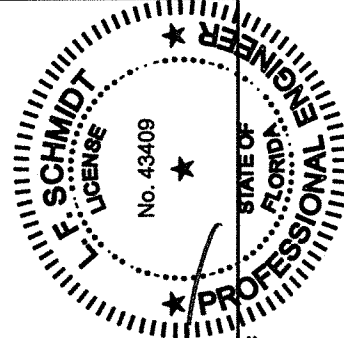
1 HORIZONTAL CROSS SECTION
5 Outswing shown - Inswing also approved



2 HORIZONTAL CROSS SECTION
5 Outswing shown - Inswing also approved

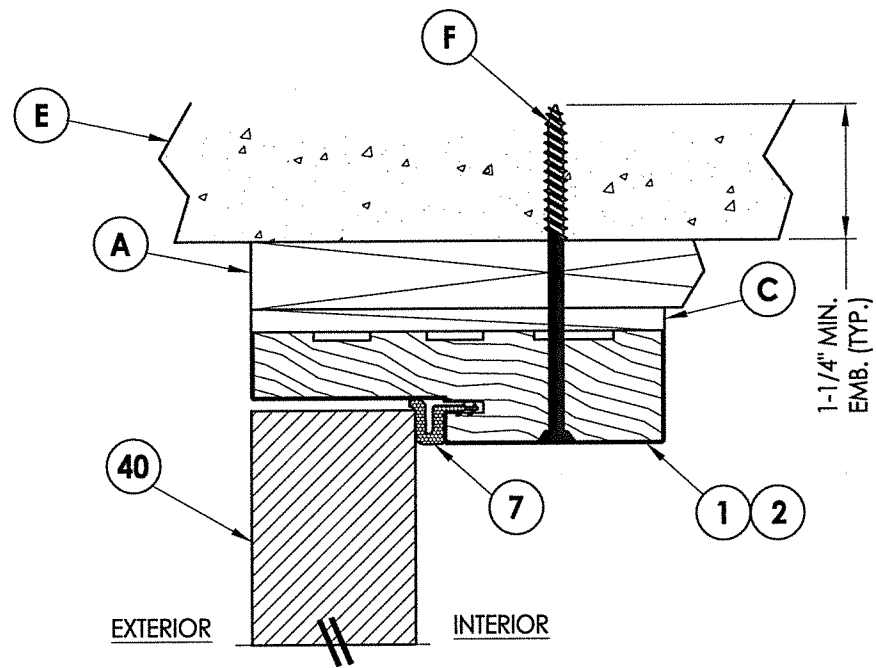


3 HORIZONTAL CROSS SECTION
5 Outswing shown - Inswing also approved

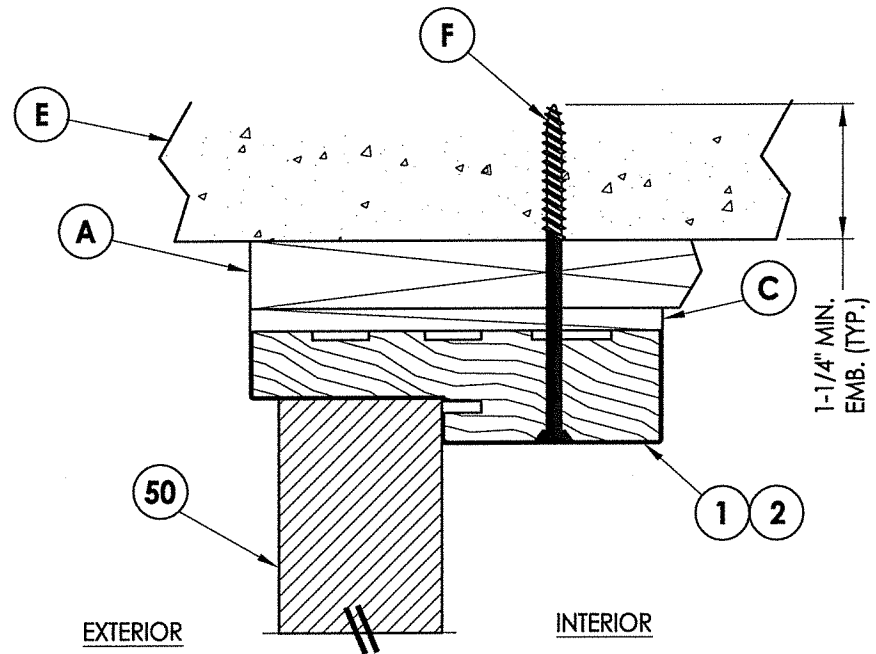


April 13, 2021
 Documents Prepared By:
 Lyndon F. Schmitt
 P.E. No. 43409
LFS
 BUILDING CONSULTANTS, INC.
 P.O. Box 230, Valrico, FL 33595
 Phone No.: 813.659.9197
 FBPE Registry No. 9813

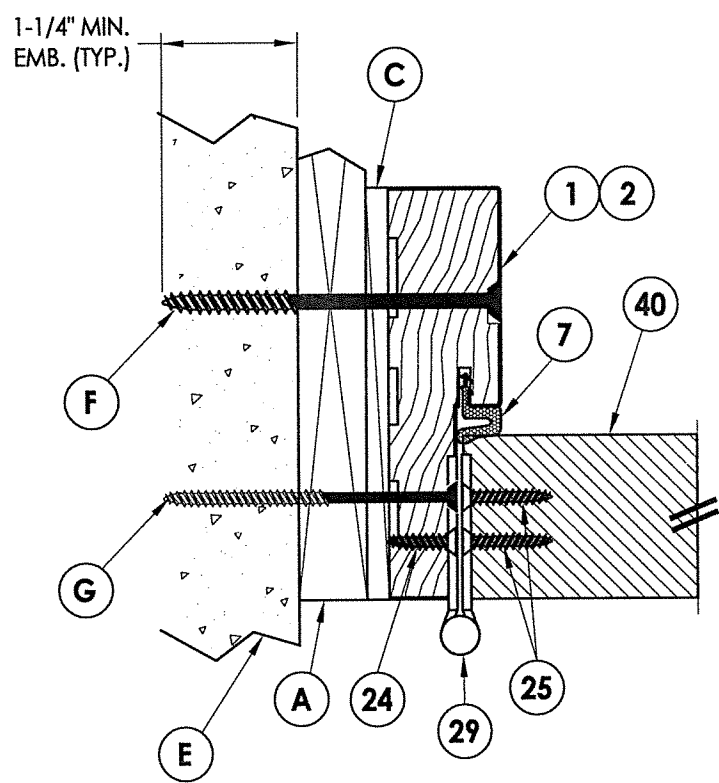
PRODUCT:	TRINITY GLASS INT'L	
PART OR ASSEMBLY:	HORIZONTAL & VERTICAL CROSS SECTIONS (2X BUCK)	
NO.	DATE	BY
REVISIONS		
DATE:	3/24/21	
SCALE:	N.T.S.	
DWG. BY:	RW	
CHK. BY:	LFS	
DRAWING NO.:	FL-25575.13	
SHEET	5	OF 13



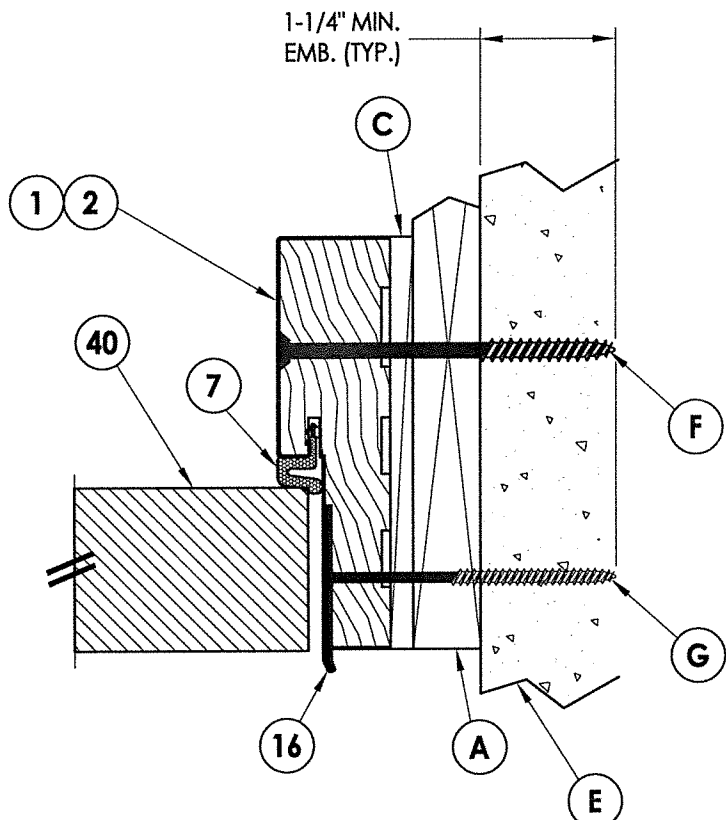
4 VERTICAL CROSS SECTION
6 Outswing shown - Inswing also approved



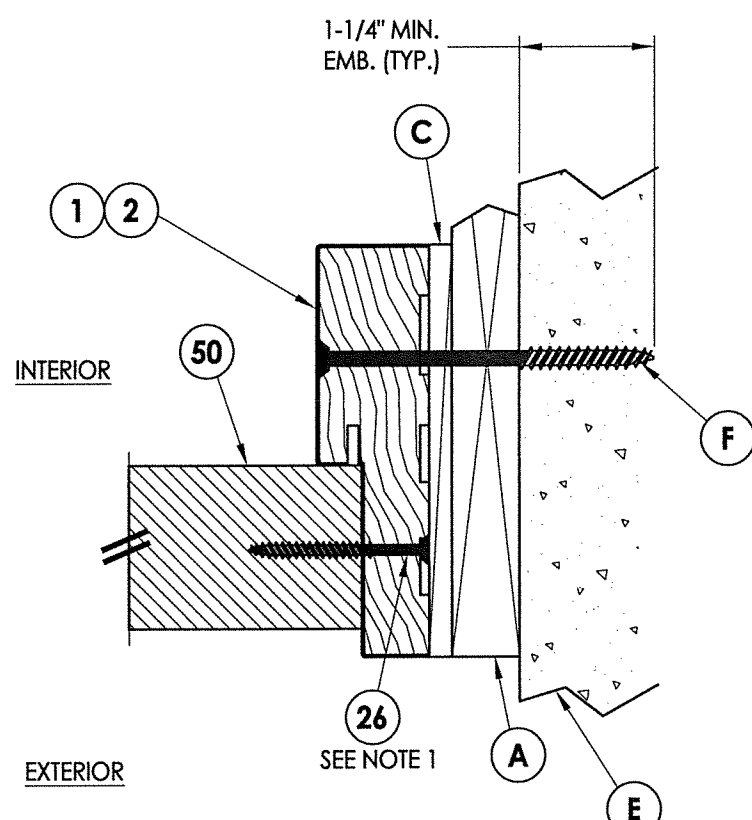
5 VERTICAL CROSS SECTION
6 Outswing shown - Inswing also approved



1 HORIZONTAL CROSS SECTION
6 Outswing shown - Inswing also approved

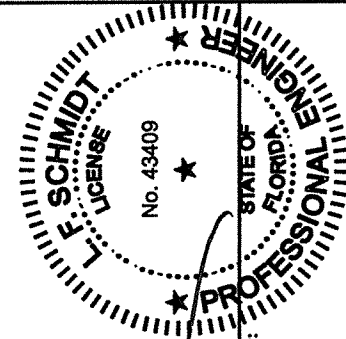


2 HORIZONTAL CROSS SECTION
6 Outswing shown - Inswing also approved



3 HORIZONTAL CROSS SECTION
6 Outswing shown - Inswing also approved

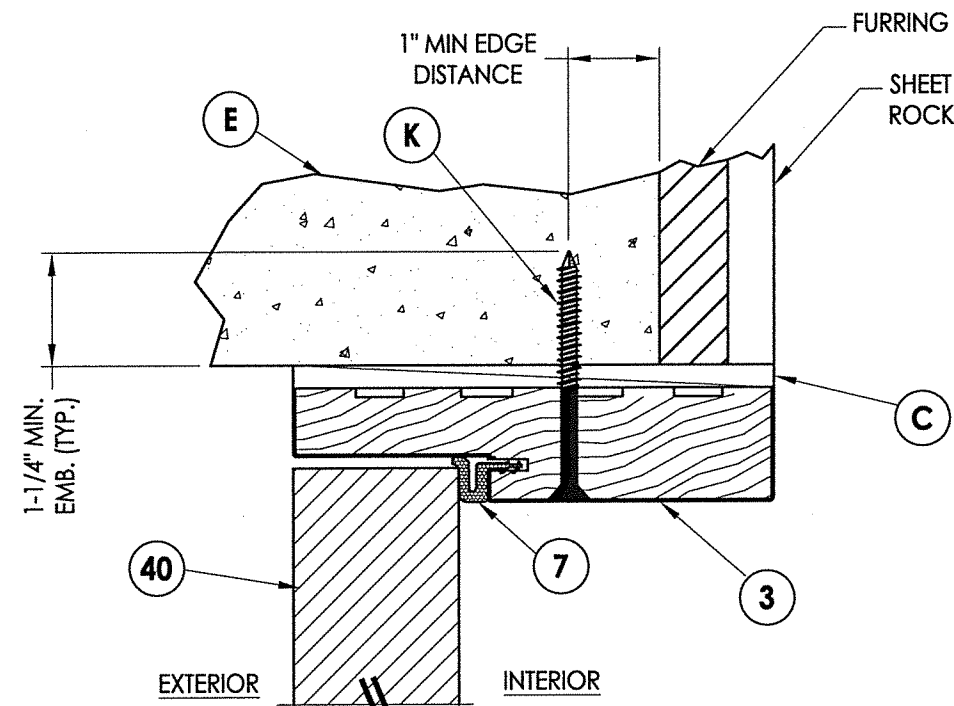
NOTE:
 1. Item #26 located 6" from each end plus 5 more equally spaced (7 total).



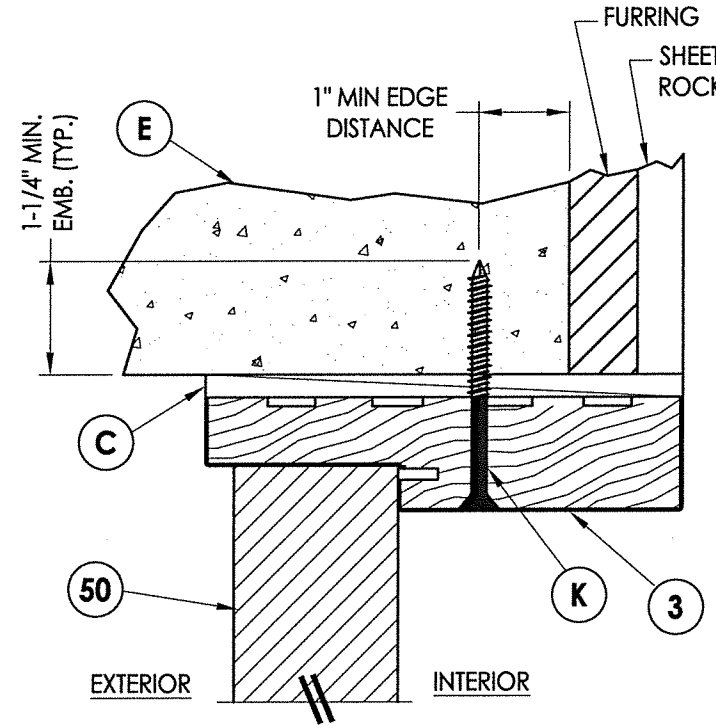
April 13, 2021
 Documents Prepared By:
 Lyndon F. Schmidt
 P.E. No. 43409

RW
 BUILDING CONSULTANTS, INC.
 P.O. Box 230, Valrico, FL 33595
 Phone No.: 813.659.9197
 FBPE Registry No. 9813

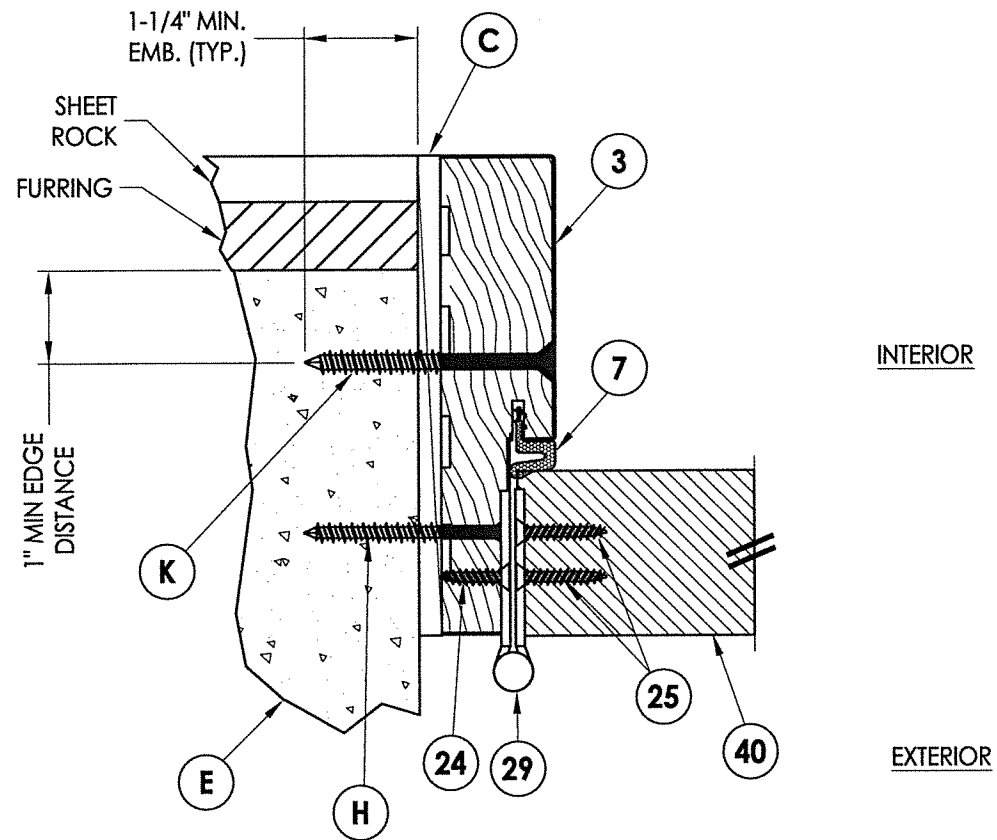
PRODUCT: TRINITY GLASS INT'L	
PART OR ASSEMBLY: HORIZONTAL & VERTICAL CROSS SECTIONS (1X BUCK)	
NO.	DATE
BY	
REVISIONS	
DATE:	3/24/21
SCALE:	N.T.S.
DWG. BY:	RW
CHK. BY:	LFS
DRAWING NO.:	FL-25575.13
SHEET	6 OF 13



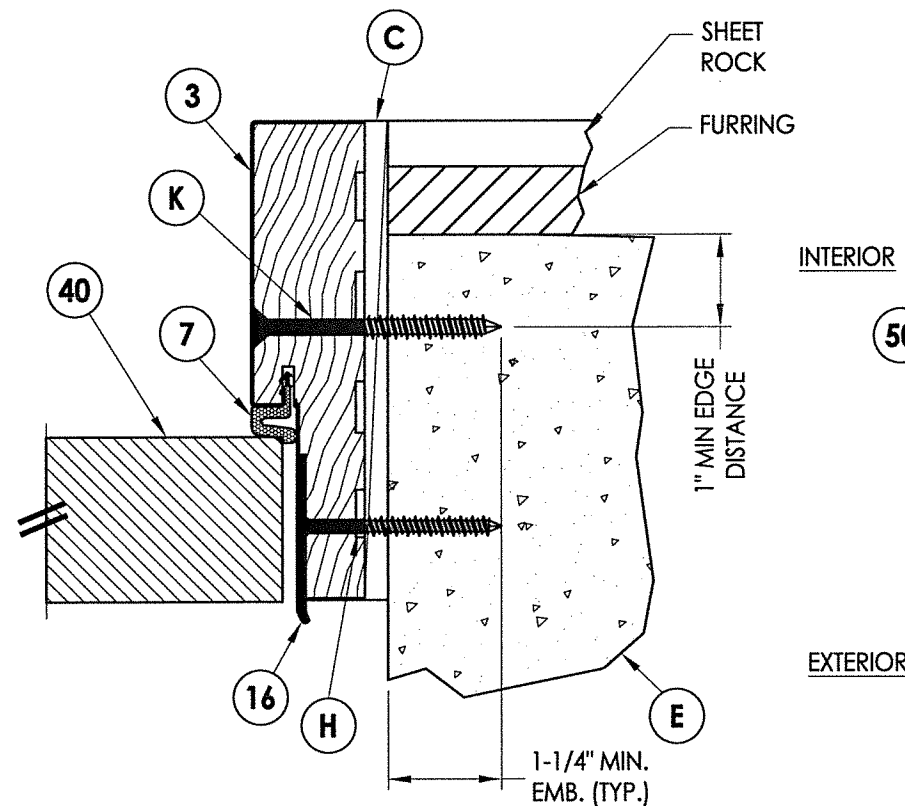
4 VERTICAL CROSS SECTION
7 Outswing only



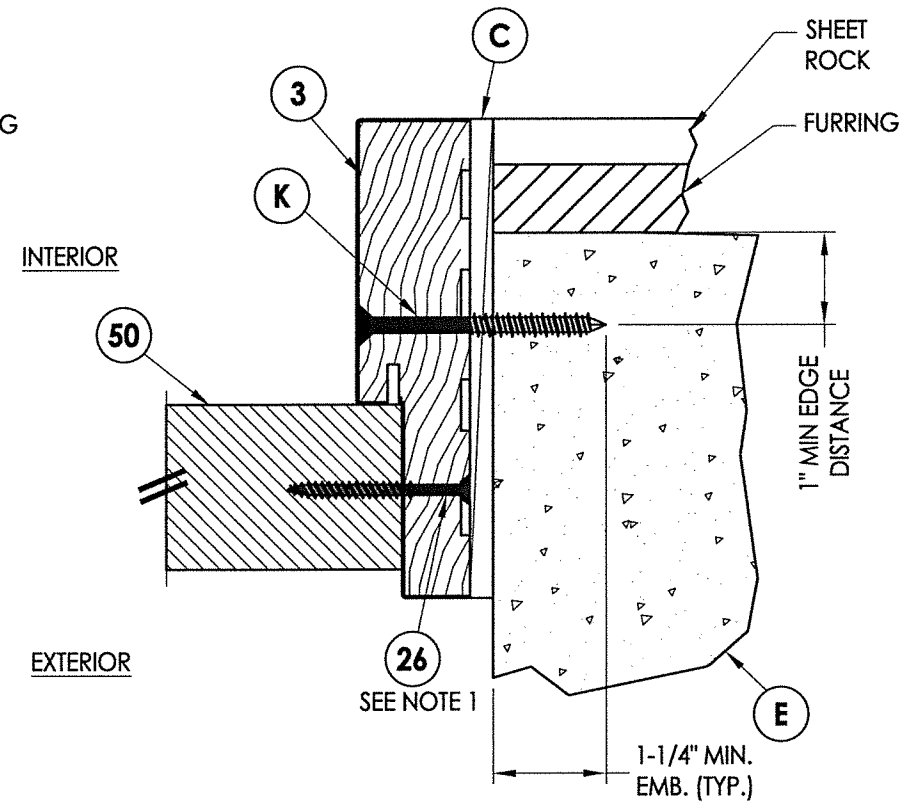
5 VERTICAL CROSS SECTION
7 Outswing only



1 HORIZONTAL CROSS SECTION
7 Outswing only

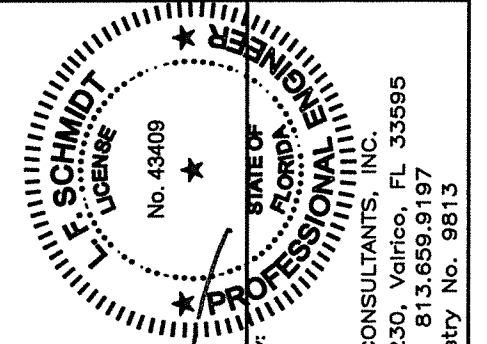


2 HORIZONTAL CROSS SECTION
7 Outswing only



3 HORIZONTAL CROSS SECTION
7 Outswing only

NOTE:
1. Item #26 located 6" from each end plus 5 more equally spaced (7 total).



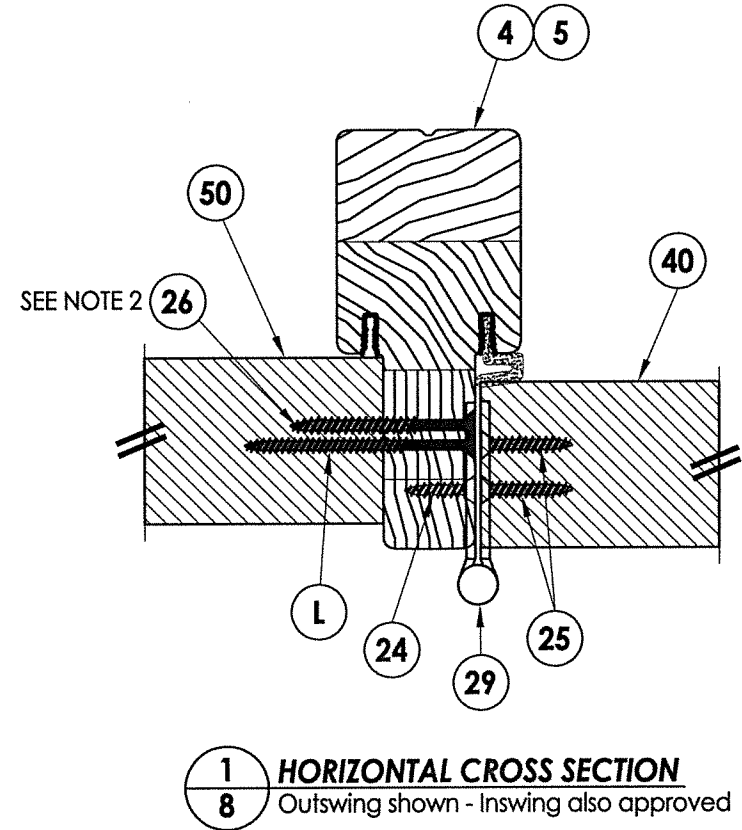
Documents Prepared By:
LFS
Lyndon F. Schmidt
P.E. No. 43409
April 13, 2021
RW BUILDING CONSULTANTS, INC.
P.O. Box 230, Valrico, FL 33595
Phone No.: 813.659.9197
FBPE Registry No. 9813

PRODUCT:		TRINITY GLASS INT'L	
PART OR ASSEMBLY:		HORIZONTAL & VERTICAL CROSS SECTIONS (DIRECT TO MASONRY)	
NO.	DATE	BY	REVISIONS
DATE: 3/24/21			
SCALE: N.T.S.			
DWG. BY: RW			
CHK. BY: LFS			
DRAWING NO.: FL-25575.13			
SHEET 7 OF 13			

Z:\Clients\Trinity Glass PERMANENTVA - Florida Product Approvals\FL - 25575\C. Drawings\FL 25575 (2020)\FL-25575.13.dwg

NOTES:

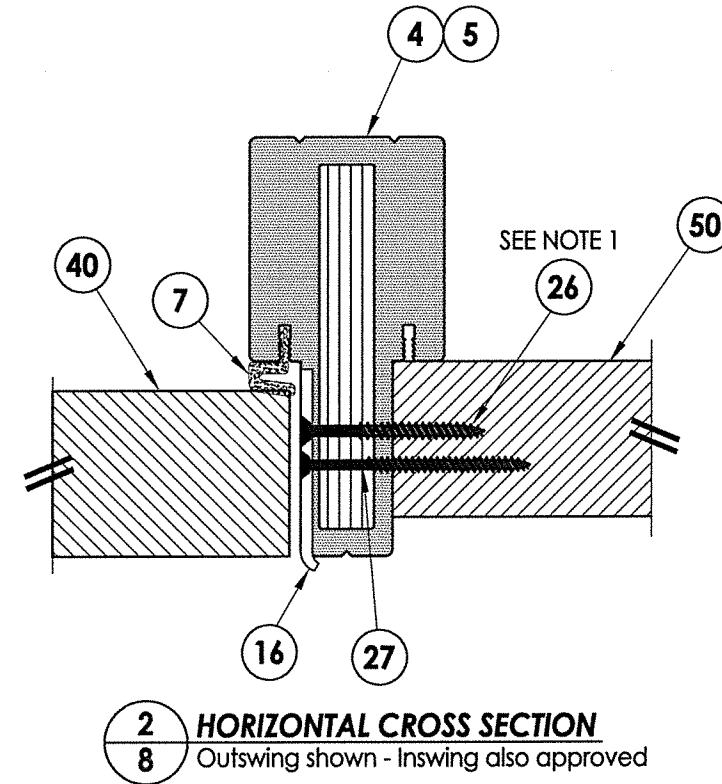
1. Item #26 located @ 6", 20" & 34" from the head down and @ 6" & 20" from the sill up (5 screws total).
2. Item #26 equally spaced between each hinge (3 total).



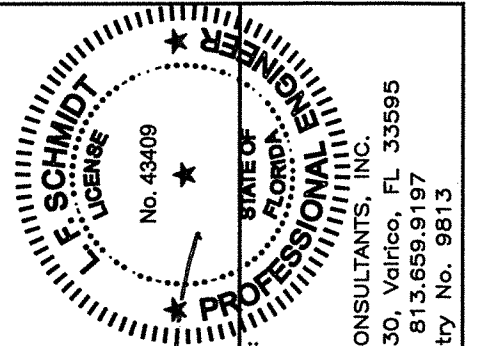
1 HORIZONTAL CROSS SECTION
8 Outswing shown - Inswing also approved

INTERIOR

EXTERIOR



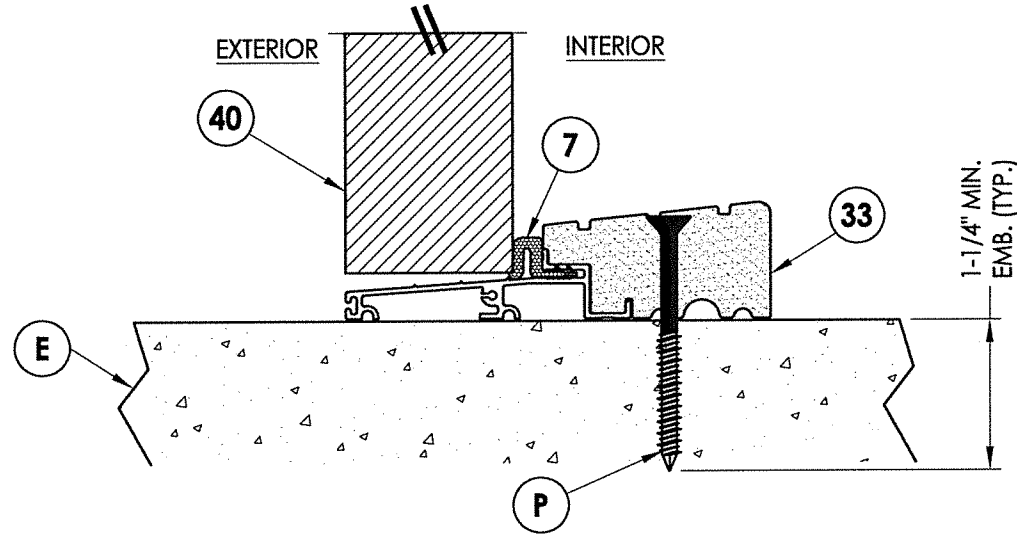
2 HORIZONTAL CROSS SECTION
8 Outswing shown - Inswing also approved



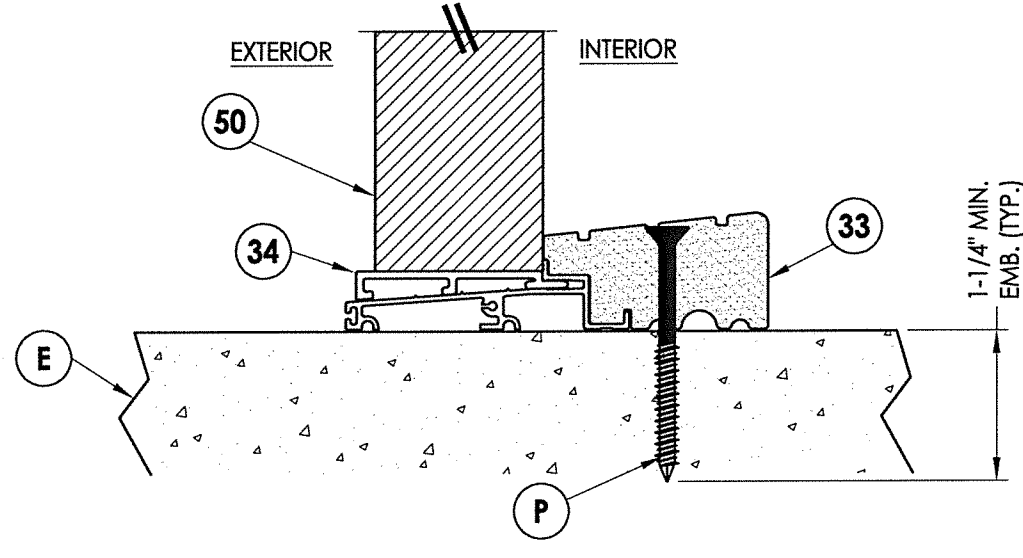
LFS
 April 13, 2021
 Documents Prepared By:
 Lyndon F. Schmidt
 P.E. No. 43409
RW
 BUILDING CONSULTANTS, INC.
 P.O. Box 230, Valrico, FL 33595
 Phone No.: 813.659.9197
 FBPE Registry No. 9813

PRODUCT:		TRINITY GLASS INT'L	
PART OR ASSEMBLY:		HORIZONTAL CROSS SECTIONS	
	NO.	DATE	BY
REVISIONS			

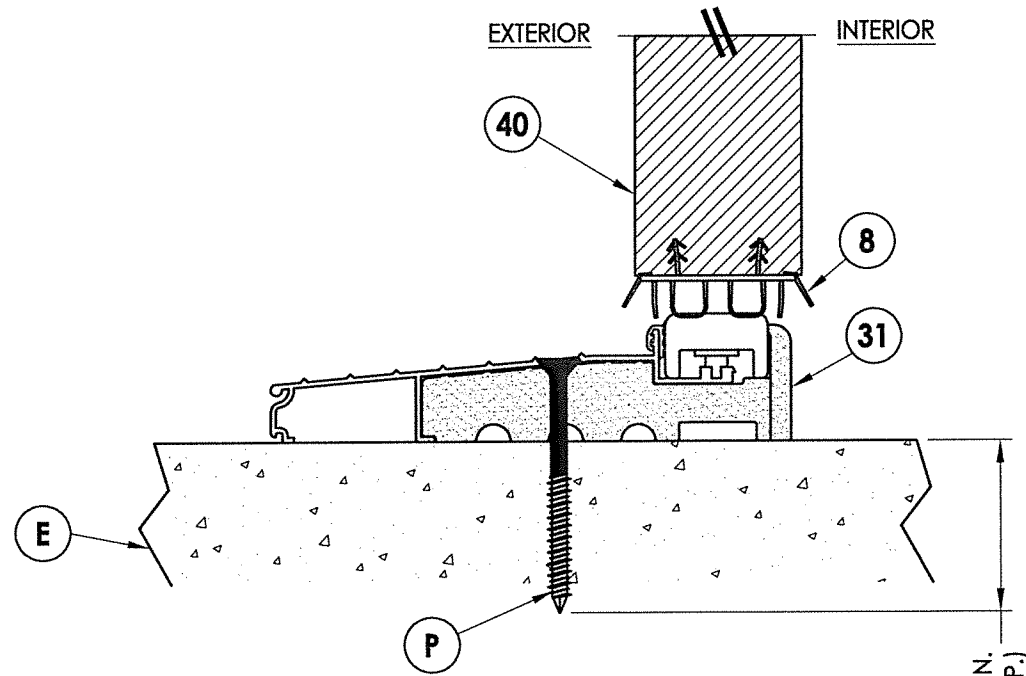
DATE: 3/24/21
 SCALE: N.T.S.
 DWG. BY: RW
 CHK. BY: LFS
 DRAWING NO.: FL-25575.13
 SHEET 8 OF 13



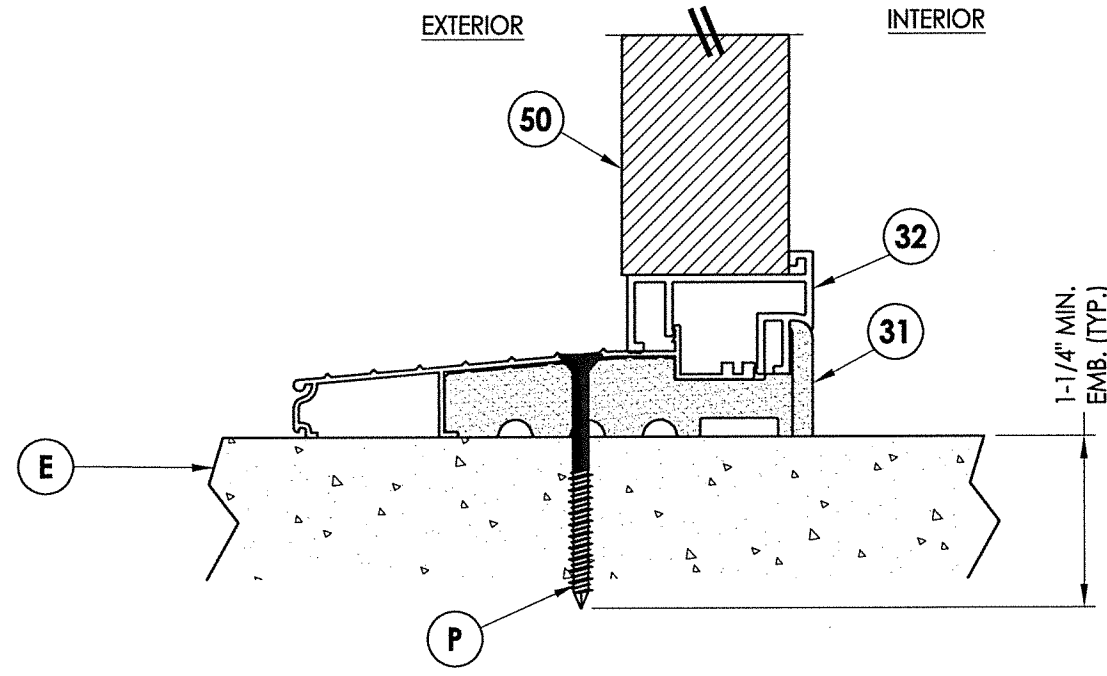
1 VERTICAL CROSS SECTION
9 Outswing sill - high dam



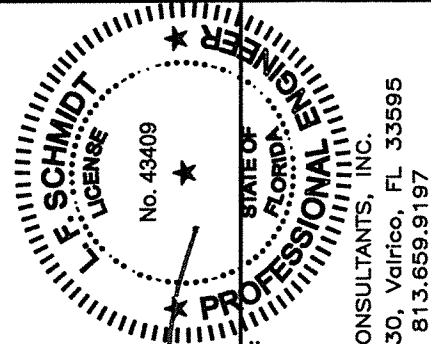
3 VERTICAL CROSS SECTION
9 Outswing sill - high dam



2 VERTICAL CROSS SECTION
9 Inswing sill



4 VERTICAL CROSS SECTION
9 Inswing sill



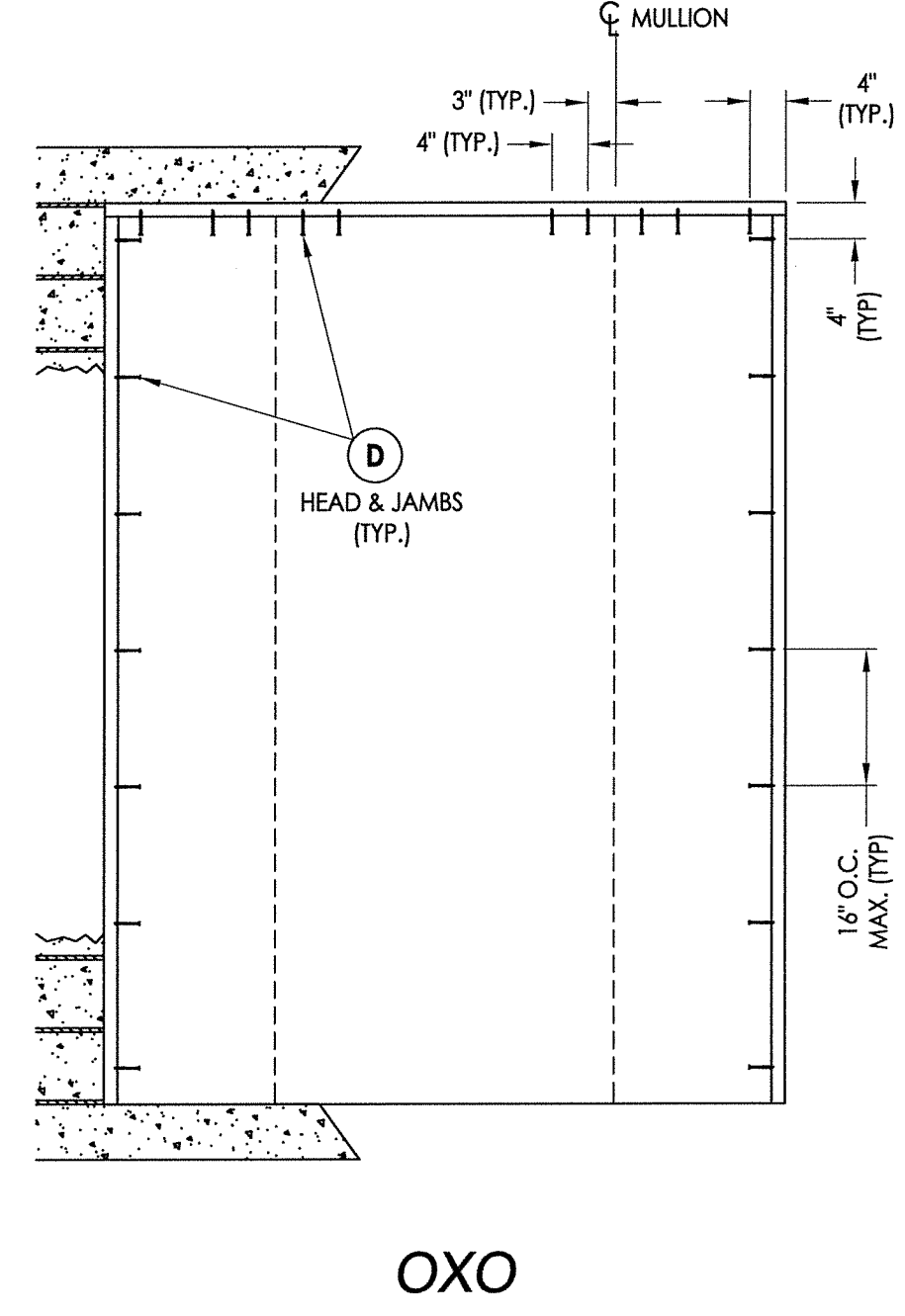
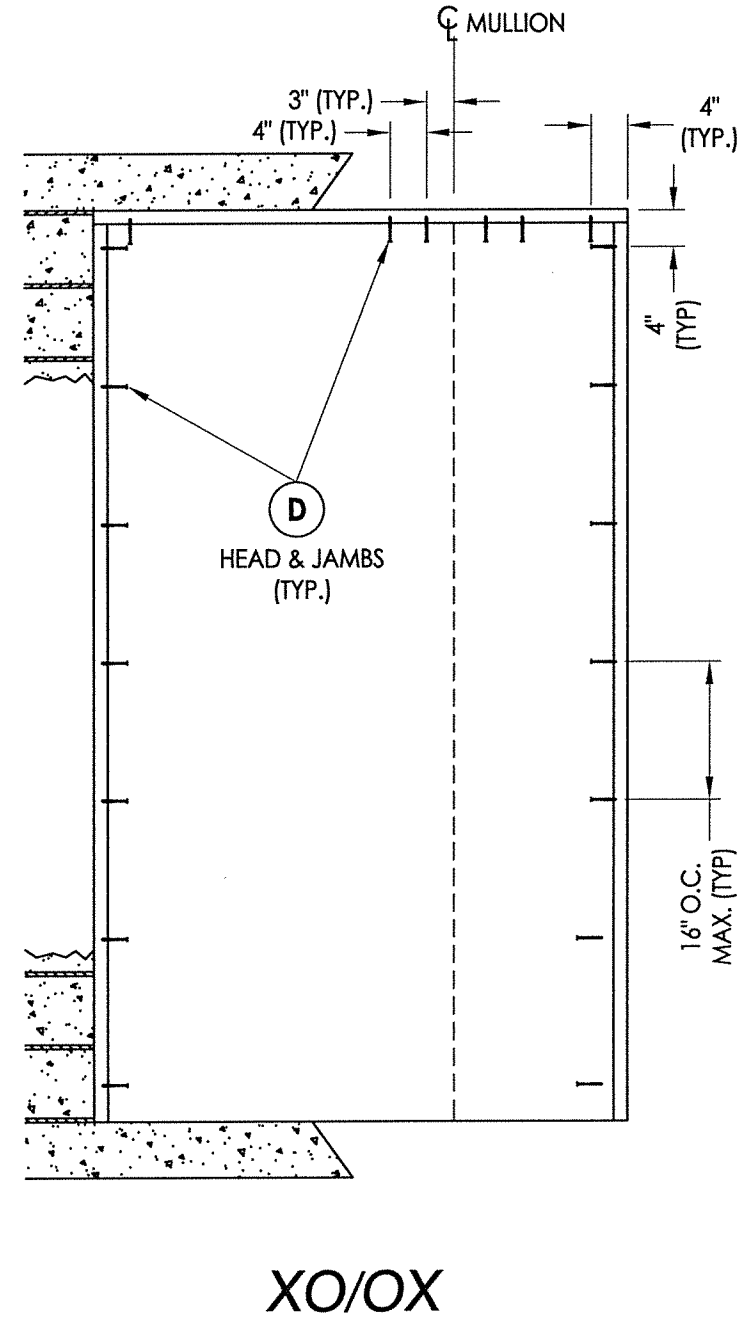
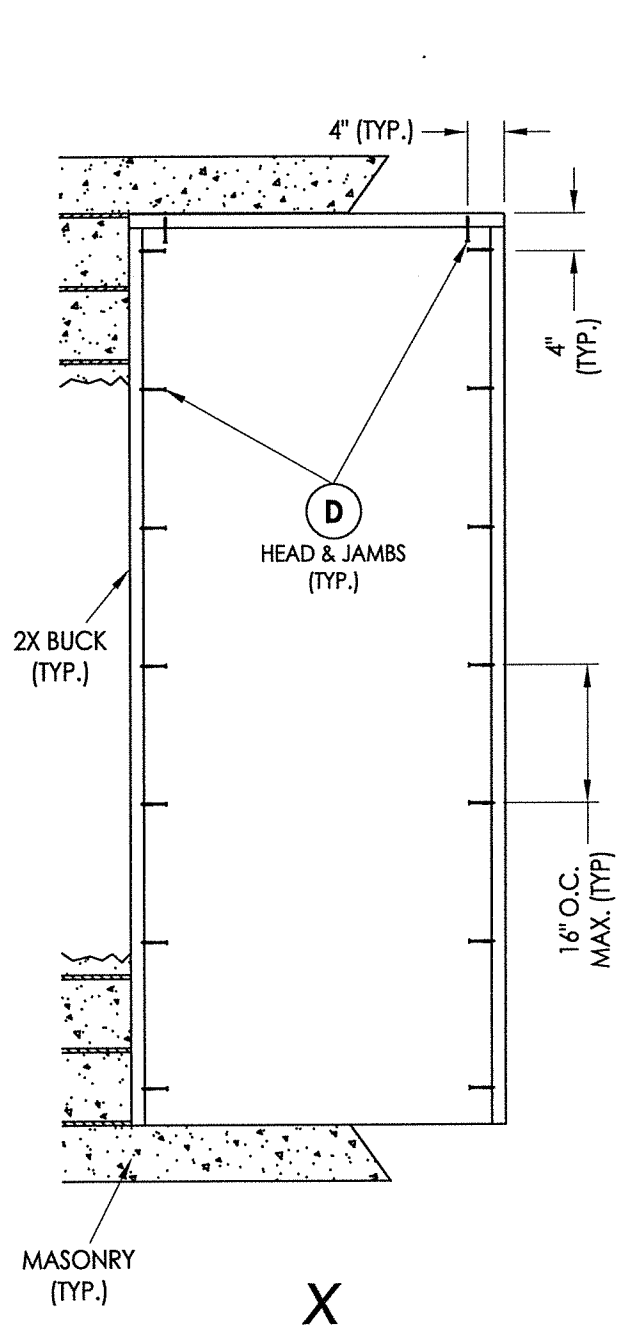
April 13, 2021
 Documents Prepared By:
 Lyndon F. Schmidt
 P.E. No. 43409

 R.W.
 BUILDING CONSULTANTS, INC.
 P.O. Box 230, Valrico, FL 33595
 Phone No.: 813.659.9197
 FBPE Registry No. 9813

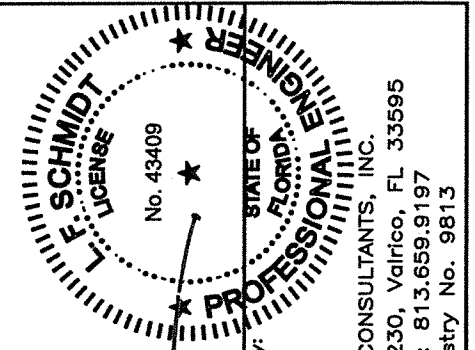
PRODUCT:	TRINITY GLASS INT'L
PART OR ASSEMBLY:	VERTICAL CROSS SECTIONS

	NO.	DATE	BY	REVISIONS

DATE: 3/24/21
 SCALE: N.T.S.
 DWG. BY: RW
 CHK. BY: LFS
 DRAWING NO.: FL-25575.13
 SHEET 9 OF 13



2X BUCK ANCHORING

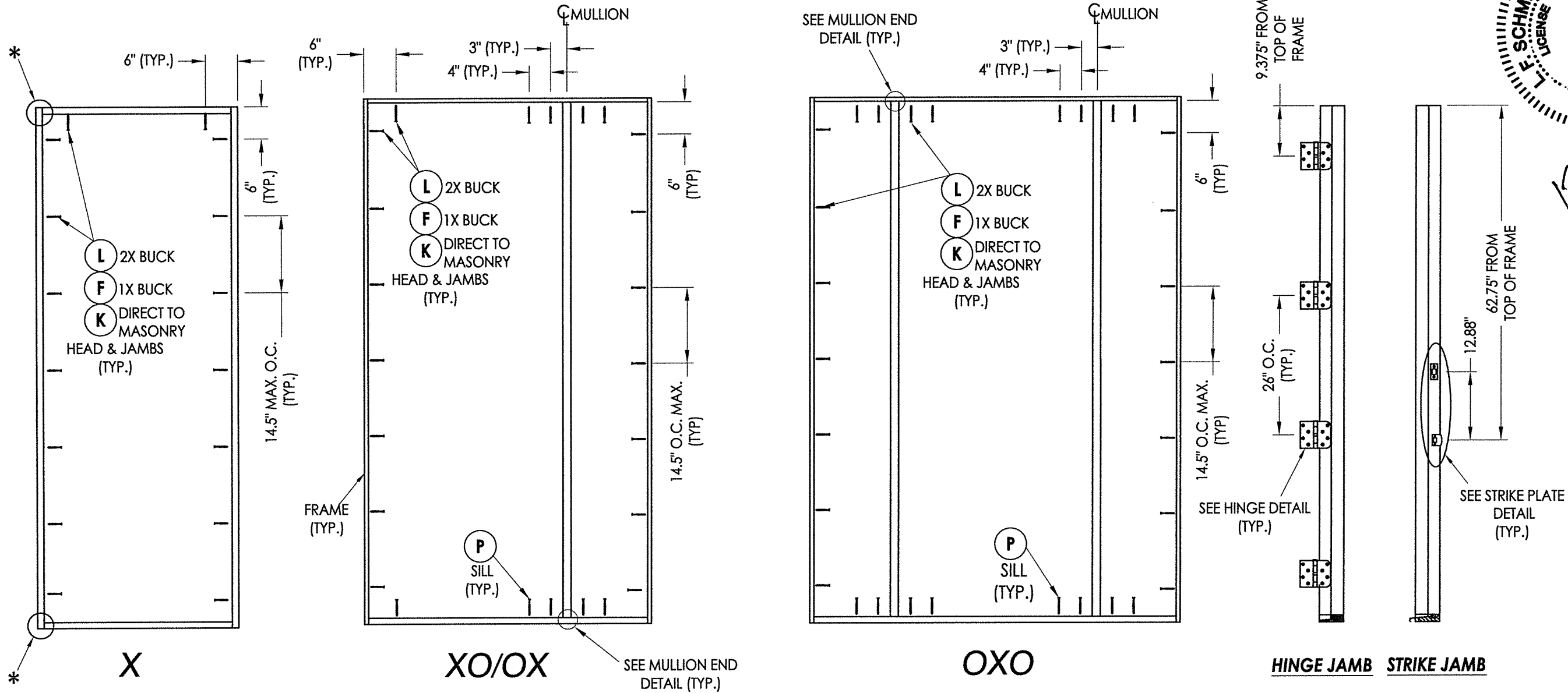


April 13, 2021
 Documents Prepared By:
 Lyndon F. Schmidt
 P.E. No. 43409
 RW BUILDING CONSULTANTS, INC.
 P.O. Box 230, Valrico, FL 33595
 Phone No.: 813.659.9197
 FBPE Registry No. 9813

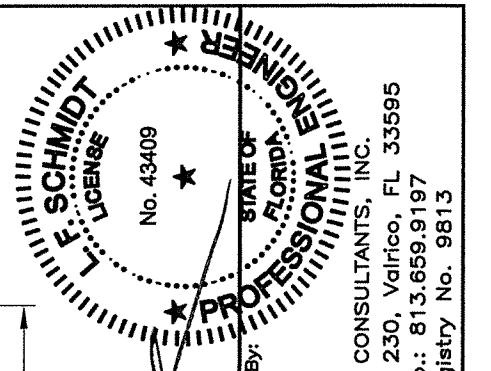
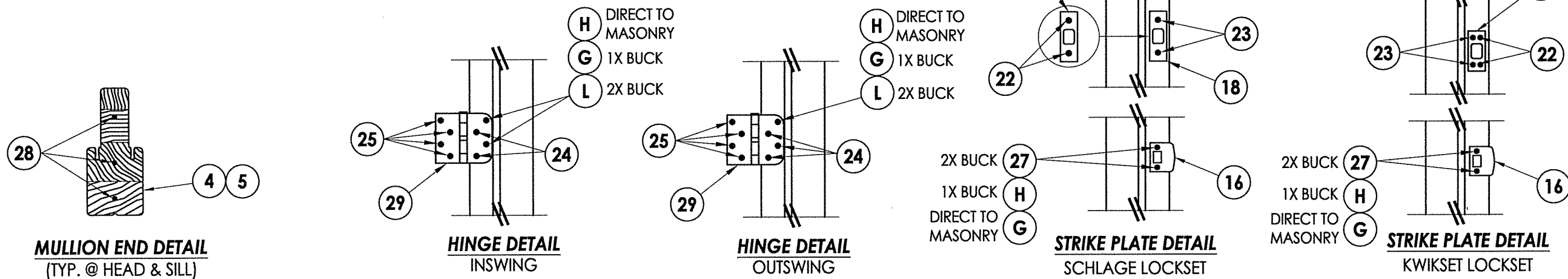
PRODUCT:	TRINITY GLASS INT'L	
PART OR ASSEMBLY:	BUCK ANCHORING	
NO.	DATE	BY
REVISIONS		

DATE: 3/24/21
 SCALE: N.T.S.
 DWG. BY: RW
 CHK. BY: LFS
 DRAWING NO.: FL-25575.13
 SHEET 10 OF 13

*NOTE: FRAME CORNERS ATTACHED w/ #8 X 2" COURSE THREAD DRYWALL SCREWS: (3) @ HEAD, (3) @ INSWING SILL & (2) @ OUTSWING SILL (TYP.).



FRAME ANCHORING

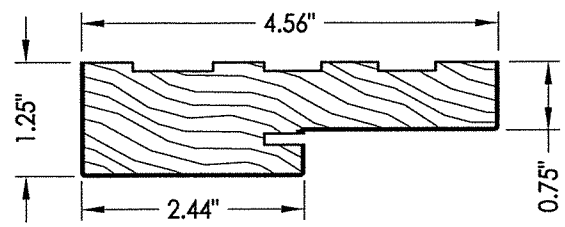


April 13, 2021
 Documents Prepared By:
 Lyndon F. Schmidt
 P.E. No. 43409
 R.W.
 BUILDING CONSULTANTS, INC.
 P.O. Box 230, Valrico, FL 33595
 Phone No.: 813.659.9197
 FBPE Registry No. 9813

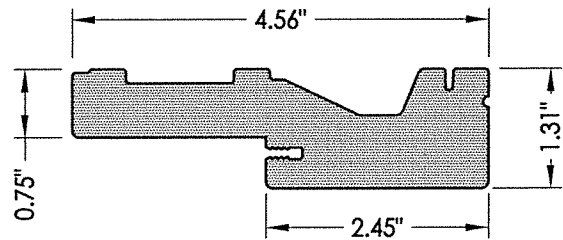
PRODUCT:	TRINITY GLASS INT'L
PART OR ASSEMBLY:	FRAME ANCHORING

NO.	DATE	BY	REVISIONS

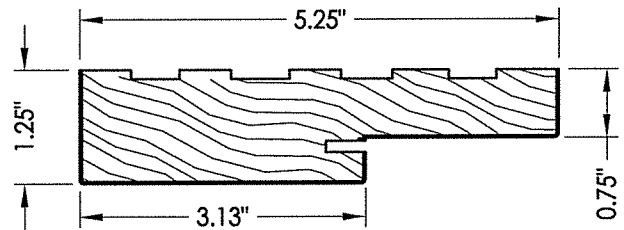
DATE: 3/24/21
 SCALE: N.T.S.
 DWG. BY: RW
 CHK. BY: LFS
 DRAWING NO.: FL-25575.13
 SHEET 11 of 13



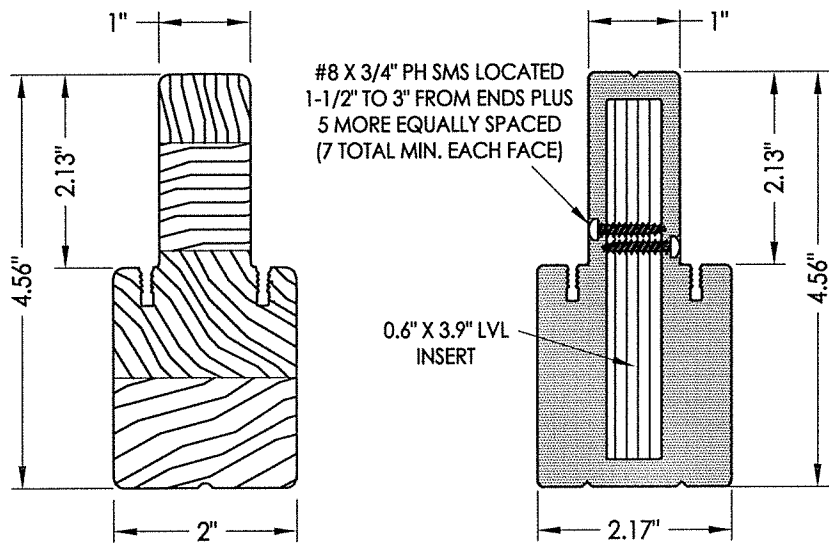
1 HEAD & JAMBS
FINGER JOINT PINE



2 HEAD & JAMBS
PVC

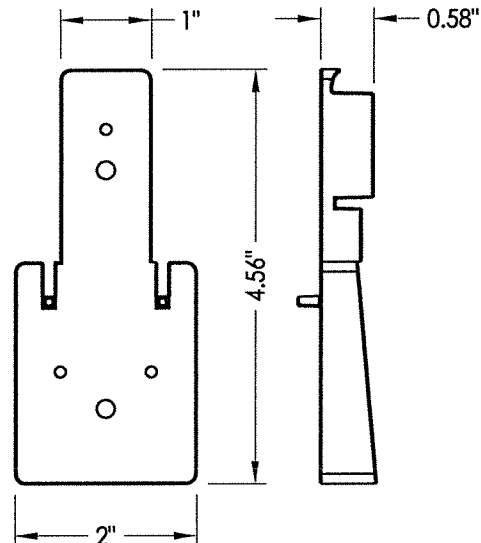


3 HEAD & JAMBS
FINGER JOINT PINE

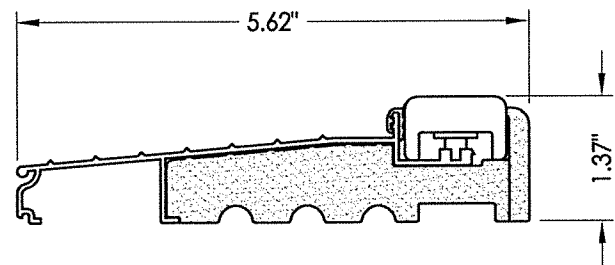


4 INTEGRAL MULLION
PINE

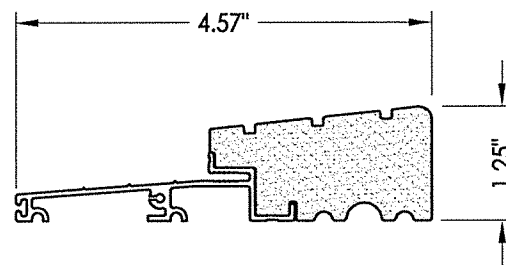
5 INTEGRAL MULLION
PVC/LVL



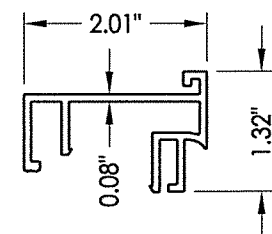
6 INTEGRAL MULLION BASE KIT
Optional



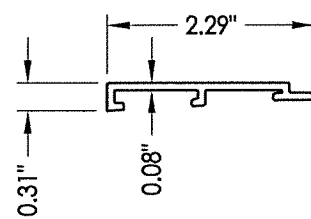
31 INSWING THRESHOLD



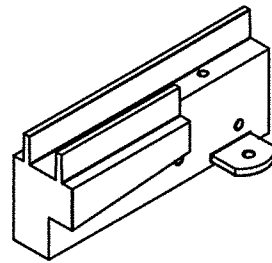
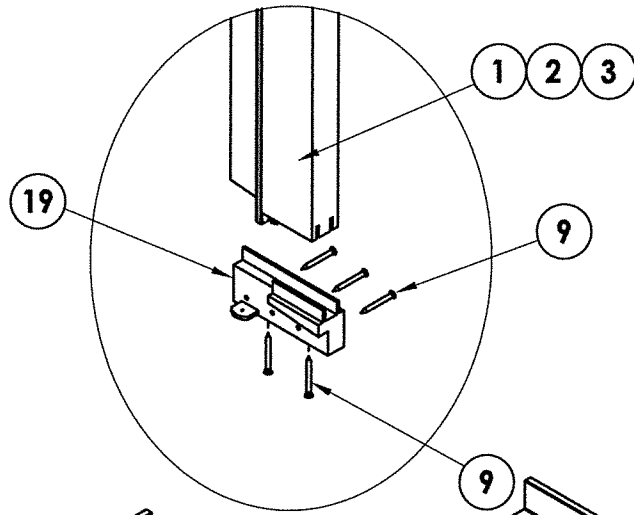
33 OUTSWING THRESHOLD
High-dam



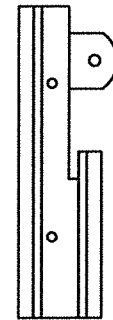
32 SIDELITE SPACER
Inswing



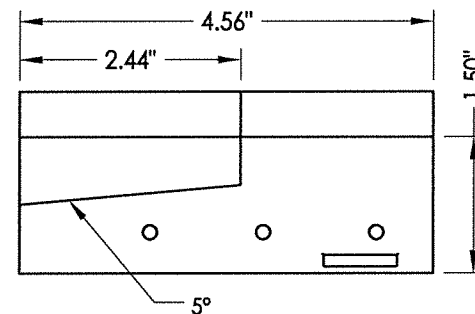
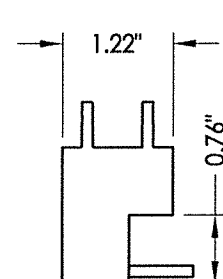
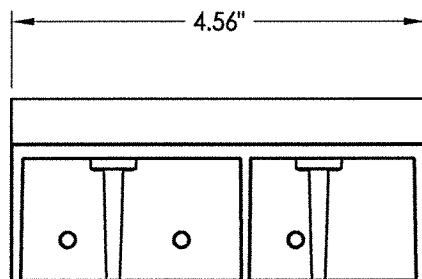
34 SIDELITE SPACER
Outswing



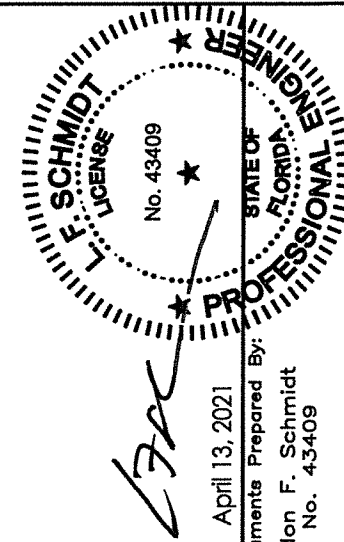
SILLKEY (LEFT)



SILLKEY (RIGHT)



19 SILLKEY DETAILS
Optional



April 13, 2021

Documents Prepared By:
Lyndon F. Schmidt
P.E. No. 43409

RW BUILDING CONSULTANTS, INC.
P.O. Box 230, Valrico, FL 33595
Phone No.: 813.659.9197
FBPE Registry No. 9813

PRODUCT: TRINITY GLASS INT'L

PART OR ASSEMBLY: COMPONENTS

NO.	DATE	BY

DATE: 3/24/21

SCALE: N.T.S.

DWG. BY: RW

CHK. BY: LFS

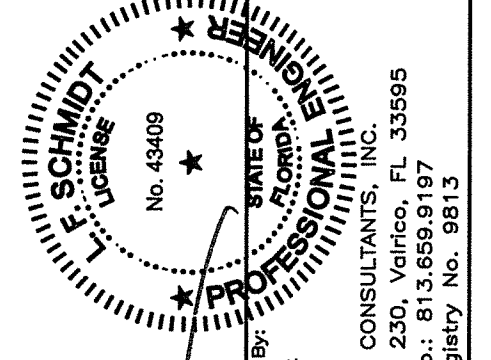
DRAWING NO.: FL-25575.13

SHEET 12 OF 13

BILL OF MATERIALS		
ITEM #	DESCRIPTION	MATERIAL
A	1X BUCK (SG >= 0.42)	WOOD
B	2X BUCK (SG >= 0.42)	WOOD
C	1/4" MAX. SHIM SPACE	-
D	1/4" X 2-3/4" PFH DeWALT OR ITW CONCRETE SCREW	STEEL
E	MASONRY - 3,000 PSI MIN. CONCRETE CONFORMING TO ACI 301 OR HOLLOW BLOCK CONFORMING TO ASTM C90	CONCRETE
F	1/4" X 3-3/4" PFH ITW CONCRETE SCREW	STEEL
G	3/16" X 3-1/4" PFH ITW CONCRETE SCREW	STEEL
H	3/16" X 2-1/4" PFH ITW CONCRETE SCREW	STEEL
K	1/4" X 2-3/4" PFH DeWALT CONCRETE SCREW	STEEL
L	#10 X 2-1/2" PFH WS (1.15" MIN. EMBEDMENT)	STEEL
P	1/4" X 2-3/4" PFH DeWALT OR ITW CONCRETE SCREW	STEEL
1	HEAD & JAMB (FINGER JOINT PINE: SG >= 0.42)	WOOD
2	HEAD & JAMB	PVC
3	HEAD & JAMB (5.25") (FINGER JOINT PINE: SG >= 0.42)	WOOD
4	INTEGRAL MULLION (PINE: SG >= 0.42)	WOOD
5	INTEGRAL MULLION (PVC)	PVC
6	INTEGRAL MULLION BASE KIT	ABS
7	WEATHERSTRIP	FOAM
8	DOOR BOTTOM SWEEP	PVC
9	#6 X 1-1/4" PFH DRYWALL SCREW	STEEL
11	#9 X 2-1/4" PFH WOOD SCREW	STEEL
16	LATCH STRIKE PLATE	STEEL
17	DEADBOLT STRIKE PLATE	STEEL
18	DEADBOLT SUB-STRIKE PLATE	STEEL
19	SILLKEY	ABS
22	#8 X 1/2" PFH WOOD SCREW	STEEL
23	#12 X 2-1/2" PFH WOOD SCREW	STEEL
24	#9 X 3/4" PFH WS	STEEL
25	#9 X 1" PFH WS	STEEL
26	#10 X 2" PFH WS	STEEL
27	#8 X 2-1/2" PFH WOOD SCREW	STEEL
28	#10 X 3" PFH WOOD SCREW	STEEL
29	4" X 4" HINGE	STEEL
31	IN swing THRESHOLD ALUMINUM w/ COMPOSITE SUBSTRATE	ALUM/ COMP
32	SIDELITE SPACER - IN swing	PVC
33	OUT swing HIGH - DAM THRESHOLD ALUMINUM w/ COMPOSITE SUBSTRATE	ALUM/ COMP
34	SIDELITE SPACER - OUT swing	PVC
40	DOOR PANEL	-
50	SIDELITE PANEL	-

PRODUCT: TRINITY GLASS INT'L		REVISIONS
PART OR ASSEMBLY: BILL OF MATERIALS		
NO.	DATE	BY

DATE: 3/24/21
SCALE: N.T.S.
DWG. BY: RW
CHK. BY: LFS
DRAWING NO.: FL-25575.13
SHEET 13 OF 13



April 13, 2021
Documents Prepared By:
Lyndon F. Schmidt
P.E. No. 43409

RW BUILDING CONSULTANTS, INC.
P.O. Box 230, Valrico, FL 33595
Phone No.: 813.659.9197
FBPE Registry No. 9813

CONCRETE ANCHOR NOTES:

- 1. Concrete anchor locations at the corners may be adjusted to maintain the min. edge distance to mortar joints.
- 2. Concrete anchor locations noted as "MAX. ON CENTER" must be adjusted to maintain the min. edge distance to mortar joints, additional concrete anchors may be required to ensure the "MAX. ON CENTER" dimension are not exceeded.
- 3. Concrete anchor table:

ANCHOR TYPE	ANCHOR SIZE	MIN. EMBEDMENT	MIN. CLEARANCE TO MASONRY EDGE	MIN. CLEARANCE TO ADJACENT ANCHOR
ITW BUILDEX TAPCON®	3/16"	1-1/4"	AS SHOWN	1-1/2"
	1/4"	1-1/4"	2"	4"
DeWALT ULTRACON+®	1/4"	1-1/4"	1"	4"

WOOD SCREW INSTALLATION NOTES:

- 1. Maintain a minimum 5/8" edge distance, 1" end distance, & 1" o.c. spacing of wood screws to prevent the splitting of wood.